

CIC Membership Pack





Our logo represents an agora:

'A meeting place for discussion with no competing sides, just like the Greek theatre form. Its shape is open-ended, signifying that anyone can join the discussion and that the group has no finite size'.



(The first CIC logo used from 1988 until 2016)

Contents

- About CIC 5
- CIC Members 7
- CIC Statutory Board & Appointments 10
- CIC Council Member Representation & Voting 14
- CIC Key Areas of Activities 15
- CIC Organisational Chart 18
- CIC Committees/Panels 19
- External Representation 25
- Business Based Activities 29
- CIC Board 2018 32
- CIC Staff 40
- CIC Meeting Dates **Error! Bookmark not defined.**

CIC Chairmen

2016-2019	Professor John Nolan
2014-2016	Tony Burton
2012-2014	Jack Pringle
2010-2012	Gordon Masterton OBE
2008-2010	Keith Clarke CBE
2006-2008	The Rt Hon Nick Raynsford
2004-2006	Stuart Henderson
2002-2004	Turlogh O'Brien CBE
2000-2002	Michael Dickson CBE
1998-2000	Robin Nicholson CBE
1996-1998	Christopher Vickers CBE
1994-1996	Robin Wilson CBE
1991-1994	Sir Ian Dixon CBE
1988-1991	Sir Edmund (Ted) Happold

About CIC

The Construction Industry Council (CIC) was established on 2 November 1988. It was initially the Building Industry Council (BIC) but changed its title to CIC in 1990.

CIC occupies a key role within the UK construction industry providing a single voice for professionals in all sectors of the built environment through its collective membership of 500,000 individual professionals and more than 25,000 firms of construction consultants.

CIC exists solely to provide cohesion amongst the professional organisations that plan, design, construct, manage and maintain the built environment. We are not a trade association and we do not represent individual companies; we are an umbrella body that brings together around 50 professional ('not-for-profit') organisations in the built environment.

Most of our work is focused on liaison with government and other national authorities. CIC represents professional interests to the Construction Leadership Council, the MHCLG Industry Response Group and other key agencies. These bodies bring the industry together with government and its clients. We have regular ongoing dialogue and meetings with Ministers and officials across government.

Information dissemination is a key function for CIC and we alert members to issues, particularly in relation to government activity, through email newsletters, digests briefings and personal contact. Many members publish this information to their own membership, either electronically or via their own newsletter/journals.

The breadth and depth of its membership means that CIC is the only single body able to speak with authority for the built environment professions on the diverse issues connected with the built environment without being constrained by the self-interest of any particular sector of the industry.

CIC co-owns Construction Umbrella Bodies (Holdings) Ltd, alongside the Construction Products Association, which owns the successful Considerate Constructors Scheme; and CIC also wholly-owns a subsidiary company, CICAIR Ltd, which manages the Approved Inspector Register.

The Construction Industry Council (CIC) is a company limited by guarantee and the company number is 02388396 with its registered office at 26 Store Street, London WC1E 7BT.

CIC Vision

“To be recognised and respected by government and across the UK construction industry as an effective thought leader, representing the UK built environment professions together”

CIC Mission

“To improve the UK construction industry by collectively representing and supporting the built environment professions”

CIC works with its members and others to facilitate the creation and maintenance of sustainable built environment that serves the needs of society.

Strategic Priorities

The Council's three Strategic Priorities, which will be of equal importance, for the period 2016-2020, as follows - the CIC:-

- Provides thought leadership relevant to the construction industry and the wider built environment
- Champions and collectively represents UK built environment professions
- Promotes collaboration and knowledge sharing amongst its members

Unless otherwise determined by Council, all activities of CIC will be required to support one (or more) of these strategic priorities.

Rules & Bylaws 2018/19

The Rules & Byelaws 2018/19, as approved by the AGM in May 2018 are available on request.

CIC Members

ACA	Association of Consultant Architects
ACAI	Association of Consultant Approved Inspectors
ACE	Association for Consultancy and Engineering
APM	Association for Project Management
APS	Association for Project Safety
ASFP	Association for Specialist Fire Protection
BAFE	British Approvals for Fire Equipment
BCS	British Computing Society - the Chartered Institute for IT
BIID	British Institute of Interior Design
BIFM	British Institute of Facilities Management
BRE	Building Research Establishment
BSRIA	Building Services Research and Information Association
CABE	Chartered Association of Building Engineers
CIAT	Chartered Institute of Architectural Technologists
CIBSE	Chartered Institution of Building Services Engineers
CICES	Chartered Institution of Civil Engineering Surveyors
CIH	Chartered Institute of Housing
CIHT	Chartered Institution of Highways & Transportation
CIOB	Chartered Institute of Building
CIPHE	Chartered Institute of Plumbing and Heating Engineering
CIRIA	Construction Industry Research and Information Association
GF	Ground Forum
ICE	Institution of Civil Engineers
ICWCI	Institute of Clerks of Works and Construction Inspectorate
IET-BES	Institution of Engineering and Technology - Built Environment Sector
IFE	Institution of Fire Engineers
IIRSM	International Institute of Risk & Safety Management
ISSE	Institute of Specialist Surveyors and Engineers
IStructE	Institution of Structural Engineers
LABC	Local Authority Building Control
LI	Landscape Institute
NHBC	National House-Building Council
RIBA	Royal Institute of British Architects
RICS	Royal Institution of Chartered Surveyors
RTPI	Royal Town Planning Institute
SAFed	The Safety Assessment Federation

Associate Members

ADJ SOC	Adjudication Society
BACH	British Association of Construction Heads
BBA	British Board of Agrément
BSI	British Standards Institute
CCS	Considerate Constructors Scheme
CIMCIG	Chartered Institute of Marketing (Construction Industry Group)
CIPR	Chartered Institute of Public Relations
KCL	King's College London Centre of Construction Law and Dispute Resolution
LCI-UK	Lean Construction Institute
SCL	Society of Construction Law
SFE	Society of Facade Engineering
UCEM	University College of Estate Management

Honorary Affiliate Members

AA	The Access Association
COTAC	Council on Training in Architectural Conservation
COYO	Class of Your Own
CYT	Construction Youth Trust
RNIB	Royal National Institute of Blind People
SPONGE	<i>A network of young property and construction professionals who share an interest in sustainable development</i>
THE EDGE	<i>A campaigning built-environment think tank</i>
UK-GBC	UK - Green Building Council
We Build the Future	<i>Registered charity – for Life without cancer</i>

Members Categories

There are three categories of membership:

CIC MEMBERS:

UK based Professional Institutions, Business or Standards Setting Associations or Built Environment Professional Services Organisations, whose primary purpose is engaged with the planning, procuring, designing, constructing, training, developing, researching, regulating, maintaining or managing the built environment.

CIC ASSOCIATES:

UK based non-commercial organisations involved in the planning, procuring, designing, constructing, training, developing, researching, regulating, maintaining or managing the built environment.

CIC HONORARY AFFILIATES:

For individuals and organisations that CIC wishes to recognise, by invitation only. There is no membership subscription and it does not confer any membership rights.

Membership Principles

All new CIC Members, Associates and Honorary Affiliates are to be approved by the CIC Council, based on recommendations from the CIC Board and compliance with the relevant agreed membership criteria.

The Council may choose to delegate the approval of Associates and Honorary Affiliates to the Statutory Board.

Only CIC Members are part of the governance and policy setting of the CIC, with subscriptions and Council voting rights scaled to the size of organisation, in

recognition of the number of professionals represented by different scales of CIC Member organisations.

Membership Subscriptions

Subscriptions as agreed from year-to-year by the Council, paid by CIC Members and CIC Associates.

CIC Members are scaled (Tiers A+B+C) to match the different scales of organisations. The level of subscription will be based on the organisation's overall turnover.

Membership subscription rates for 2018 are:

- Tier A: large organisations £51,500
- Tier B1: £22,750
- Tier B2: medium organisations £15,500
- Tier B3: £8,250
- Tier C: small organisations £3,650

CIC Associates are scaled (Tiers D+E+F) to match the different scales of organisations. The level of subscription will be based on the organisation's overall turnover.

Membership subscriptions rates for 2018 are:

- Tier D: £2,575
- Tier E: £1,550
- Tier F: £625

In addition to the subscriptions, members will be invited to contribute funding to projects both generically and in response to future demand.

CIC Statutory Board & Appointments

The Council has delegated authority to a separate group to act as a Board of Directors for the purposes of the Companies Act. The Statutory Board comprises up to 12 directors, consisting of:

CHAIRMAN elected by Council for 2 years plus 1 year preceding and following as Deputy Chair (= 4 years in total) [*currently Professor John Nolan*]

DEPUTY CHAIRMAN elected by Council as part of 4 year system, including 2 middle years as Chair (= 4 years in total) [*currently Stephen Hodder MBE*]

CHIEF EXECUTIVE ex-officio – appointed by the Council [*currently Graham Watts OBE*]

HONORARY TREASURER elected by the Council (maximum term = 5 years) or Executive Finance Director (ex-officio appointed by the CEO/Board) [*currently Jo Watkins*]

CHAIR OF SUBSIDIARY STATUTORY COMPANY CICAIR LTD elected by CIC Council for 4 years [*currently Rt. Hon. Nick Raynsford*]

3 DIRECTORS candidates for each of the 3 seat nominated from each Tier of CIC membership (Tiers A+B+C), for election by Council – elected for 2 to 3 years, but renewable [*currently Dale Sinclair, Nick Mead and Noel Farrer*]

Up to **4 SPECIALIST DIRECTORS** selected by the Board for their relevant skills, experience, diversity balance, elected or co-opted for 3 years [*currently Tony Burton, Louise Clarke, Maria Coulter*].

Timing of elections and appointments to be staggered to achieve a continuity of experience.

In addition, Ann Bentley sits on the CIC Board as an “Advisor”, to act as a link to the Construction Leadership Council.

THE CHAIRMAN

The Council shall have power to appoint and remove such person (whether or not a representative to the Council) as it shall think fit to be a Chairman.

In any case on appointment the Chairman shall cease to be a representative. The Chairman will be appointed for a period of two years commencing from the conclusion of the next meeting of Council [usually June] held following the Annual General Meeting, and may not be re-elected on expiry of that period.

The Chairman shall normally be appointed in every odd year (2019, 2021 etc). On the cessation of office as Chairman, unless otherwise determined by Council, the Immediate Past Chairman shall remain a member of Council, and of The Statutory Board, for one further year.

The Chairman may not be a serving President, Chairman or Chief Executive Officer of a member body.

The functions of the Chairman are to:

- Chair AGM (1), Members' Conference (1); and Council Meetings (3)
- Chair the Statutory Board (6)
- Chair CEO Remuneration Committee (1)
- Chair CIC Business Panel and Project Panel in alternate years (3)
- Guest at various industry events and dinners
- Meeting with member Presidents, industry bodies and Government Ministers and personnel.
- Other functions as agreed by the Chairman and Board.

CHAIRMAN-ELECT

Nominations for a Chairman-Elect will be sought from the Chief Executives of Council Members.

The Chairman-Elect will be elected for a period of one year at the Council meeting immediately following the Annual General Meeting; and shall take office as Chairman at the end of this year as Chairman-Elect.

The Chairman-Elect shall normally be appointed in even years (2018, 2020 etc).

Further details on Chairman-Elect is available in the Rules & Byelaws.

DEPUTY CHAIRMAN

The Immediate Past Chairman (for one year immediately following office as Chairman) and Chairman-Elect will hold the title, and be known as, Deputy Chairman during alternate years.

COMPANY SECRETARY (CHIEF EXECUTIVE)

The Secretary to the Construction Industry Council will be its Principal Executive Officer. He will act as Clerk to the Council and head a permanent staff which he will be responsible for establishing.

Within policies agreed by Council, he will seek to ensure that the CIC fulfils its objects in accordance with its Memorandum of Association.

The Secretary shall be appointed by the Council for such term, at such remuneration and upon such conditions as they may think fit; and any Secretary so appointed may be removed by them.

Key responsibilities of the Company Secretary:

- Ensuring CIC complies with all relevant laws and regulations and operates to a high ethical standard;
- Ensuring the Statutory Board complies with legislative requirements and apply good governance practice including meeting Companies Act requirements.
- In consultation with the Chairman and Directors, preparing agendas and minutes for Board meetings;
- Responsible for the development and continuous good practice of the welfare of CIC and its members and staff.
- Responsibility for the administration of the Board.
- Acting as a Director of CIC and its subsidiary companies.

HONORARY TREASURER

The Council shall also elect an Honorary Treasurer who shall hold office until the conclusion of the next meeting of the Council held following the Annual General Meeting. An Honorary Treasurer may not serve for longer than five consecutive years. The Honorary Treasurer may not be the current President/Chairman or staff member of a member organisation.

THREE MEMBER-APPOINTED DIRECTORS

The three persons elected to sit on the Board to represent CIC members.

All Members of CIC in the appropriate Tier will be invited to nominate an individual for an election to be held at Council, (at least one month prior to the Council meeting.

All members of Council will vote on candidates for each Tier. Only those members of Council who are registered will be eligible to vote

If there is no person nominated by one or more Tiers of membership, then the Council may have the discretion to appoint a candidate from another Tier.

Directors appointed by the membership are eligible to stand for a second term only but this will be subject to a re-election process by Council.

This election will normally take place at the summer meeting of Council, immediately following the AGM.

The election procedures will be the same as for the Chairman-Elect

NON-EXECUTIVE DIRECTORS

In addition, the Board may appoint up to four non-executive directors who will serve for a period up to 3 years and be eligible for appointment for a second term only.

The Role of the Statutory Board

The **Statutory Board** manages the operation of CIC on behalf of the Council. It meets up to six times per year and provides a four-monthly report on its activities and decisions to each Council meeting.

The day to day running of the Construction Industry Council will be vested in the Board. No business shall be transacted at any meeting of the Board unless a quorum is present. A quorum of the Board will be one third of those members eligible to attend.

The dates of meetings and agendas will be agreed by the Chairman and Chief Executive Officer.

The responsibility for the programming and administration of meetings rests with the Company Secretary.

Terms of Reference of the Statutory Board

- To be responsible, through the Secretary of CIC and his staff, for the day to day management of the Council including matters of finance, staffing and property;
- to be responsible for overseeing the work of the Membership Panel, Business Panel and Project Panel;
- to be responsible for producing budgets and monitoring expenditure against them;
- to be responsible for all membership matters including the recommending of the admission of new members to the Construction Industry Council;
- to be responsible for implementing and developing policy within the general strategies and guidelines laid down by Council from time to time;
- to make recommendations to Council upon major policy/strategy changes, including those proposed by other committees, persons or bodies; and
- to agree the appointment of task groups, communities of knowledge or any other operational group or panel and to report annually to the AGM regarding all such groups in existence.

CIC Council Member Representation & Voting

The CIC Council remains the governing body of CIC. It will meet at least three times per year with an additional AGM and members' conference.

Each CIC Member is to have a number of voting representatives at the CIC Council related to their scale and the number of professionals that they represent:

3 voting representatives from each of the Tier A Member organisations

2 voting representatives from each of the Tier B Member organisations

1 voting representative from each of the Tier C Member organisations

The current CIC membership would therefore produce a CIC Council of:

Chairman	x 1 =	1
4 Tier A	x 3 =	12
10 Tier B	x 2 =	20
22 Tier C	x 1 =	22

Total = 55 voting representatives

In addition to the voting representative, each CIC Member, Associate member and each Nation/Region can nominate 1 non-voting observer to attend and participate in CIC Council meetings and AGMs.

Each Member Organisation will nominate their voting representative/s to the CIC Council meeting annually. The observers can be nominated from meeting-to-meeting.

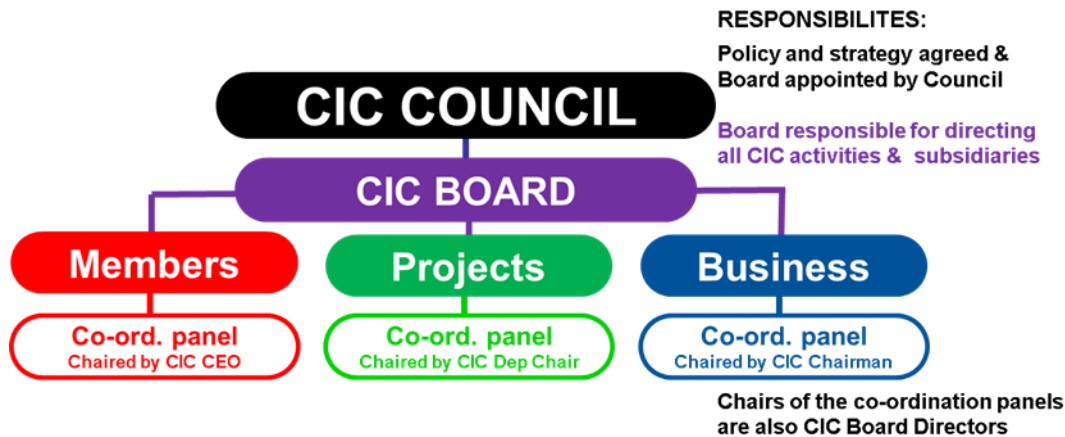
The Council is only required to meet once annually, but normally meets three times in each year (in March, June and October)

Council meetings are hosted by our Members (according to availability and venue capacity).



CIC Key Areas of Activities

The CIC organisation and business model is to be based around 3 key areas of activity, with income and expenditure streams to generate project funding and reserves. These three areas will focus on *Members*, *Projects* and *Business Services*, as illustrated by this diagram:



These three key activities have separate and different income and expenditure streams, as illustrated in the following diagram:

The CIC business model is organised around the following 3 key activities with income and expenditure streams to generate project funding and reserves:



The existing activities, Board/Council reporting and management accounting of the CIC is to be organised within these 3 activity areas.

CIC Membership Services

The Membership Panel will meet no less than four times per year.

The Membership Panel will report via the Board to the Council. In the event of any disagreement the decision of the Council will be final.

The Membership Panel will be responsible for overseeing the provision of value-for-money services to the members of CIC, which are funded from an agreed budget financed by membership subscriptions.

The Membership Panel will not have direct responsibility for the projects, which are carried out by CIC but not funded by membership subscriptions or the ongoing business activities of CIC. However, the Membership Panel will receive progress reports on these activities from the Projects Panel and Business Panel.

The Membership Panel will be responsible for the ongoing champions, committees, panels and task forces set up as part of the membership service and agreed by Members at the AGM each year. These champions, committees, panels, and task forces will report to the Board and Council via the Membership Panel. This will include responsibility for the Nations & Regions of CIC.

The Membership Panel will nominate at least four members of the Finance & Governance Committee to be approved by the Board.

The Membership Panel will be chaired by the Chief Executive. The Chairman, Deputy Chairman, Honorary Treasurer and member-appointed directors will be ex-officio members.

Each CEO (or a senior member of staff, nominated by the CEO) of a CIC Member will be a member of the Membership Panel.

Chairmen and/or Champions responsible for committees, panels and task forces reporting to the Membership Panel may be invited to meetings to discuss the work of their committees, panels and task forces, from time to time.

CIC Projects Services

CIC Projects are funded by grants and contributions, and focus on developing key issues related to thought leadership, developing knowledge, developing skills, attracting diverse talent and sustainability.

The Project Panel will be responsible for overseeing the establishment, funding, development and completion of all projects undertaken by CIC, which are not part of the membership service or ongoing business activity. (The former is overseen by the Membership Panel and the latter by the Business Panel).

All requests for CIC to host project-based activities, which are outside the Membership Services or ongoing Business activity, will be passed to the Project Panel for approval. The Project Panel will need to be satisfied that the funding and staff resources are in place to host the project and that the project's objectives fit within the strategic priorities of CIC.

Once approved, progress of project-based activity will be reported to subsequent meetings of the Project Panel, which will have responsibility for signing off on project completion.

The Project Panel will be chaired for two consecutive years by the incoming Deputy Chairman and the Chairman in his/her first year of office. The outgoing Deputy Chairman, the Chairman in his/her second year of office; the Chief Executive and the Honorary Treasurer/Finance Director will be ex-officio members.

Membership of the Project Panel will be appointed annually by the Board of CIC, to include at least four representatives of

Members who are independent of the projects overseen in that year (ie not the Chairman, Secretary or Funders of any specific project and their steering groups, or similar).

The Chairman, Secretary and Funders of each extant project will be invited to attend meetings of the Project Panel as observers.

CIC Business Services

CIC Businesses are funded by sustainable income from sales and fees – to include relevant income generating activities such as accreditation services, CICAIR Ltd, DQI, CIC publications and contracts, as well as other sustainable income generating activities approved by Council.

The Business Panel will report to the Board of CIC. In the event of any disagreement the decision of the Board of CIC will be final.

The Business Panel will be responsible for overseeing the ongoing activities undertaken within the CIC group, which are not part of the membership service or ad-hoc project activity. This will include business activities directly overseen by CIC (ie the DQI and publication of contracts); joint ventures (ie the Construction Industry Summit); wholly-owned subsidiary companies (ie CICAIR Ltd); or companies in which CIC has an ownership interest (ie CCS Ltd).

All requests or proposals for new business activities to be undertaken by CIC, which are outside the remit of Membership services budgeted and paid for from subscription income, or specific Project activity, will be passed to the Business Panel for approval. The Business Panel will need to be satisfied that the funding and staff resources are in place to host the business activity and that the business's objectives fit within the strategic priorities of CIC.

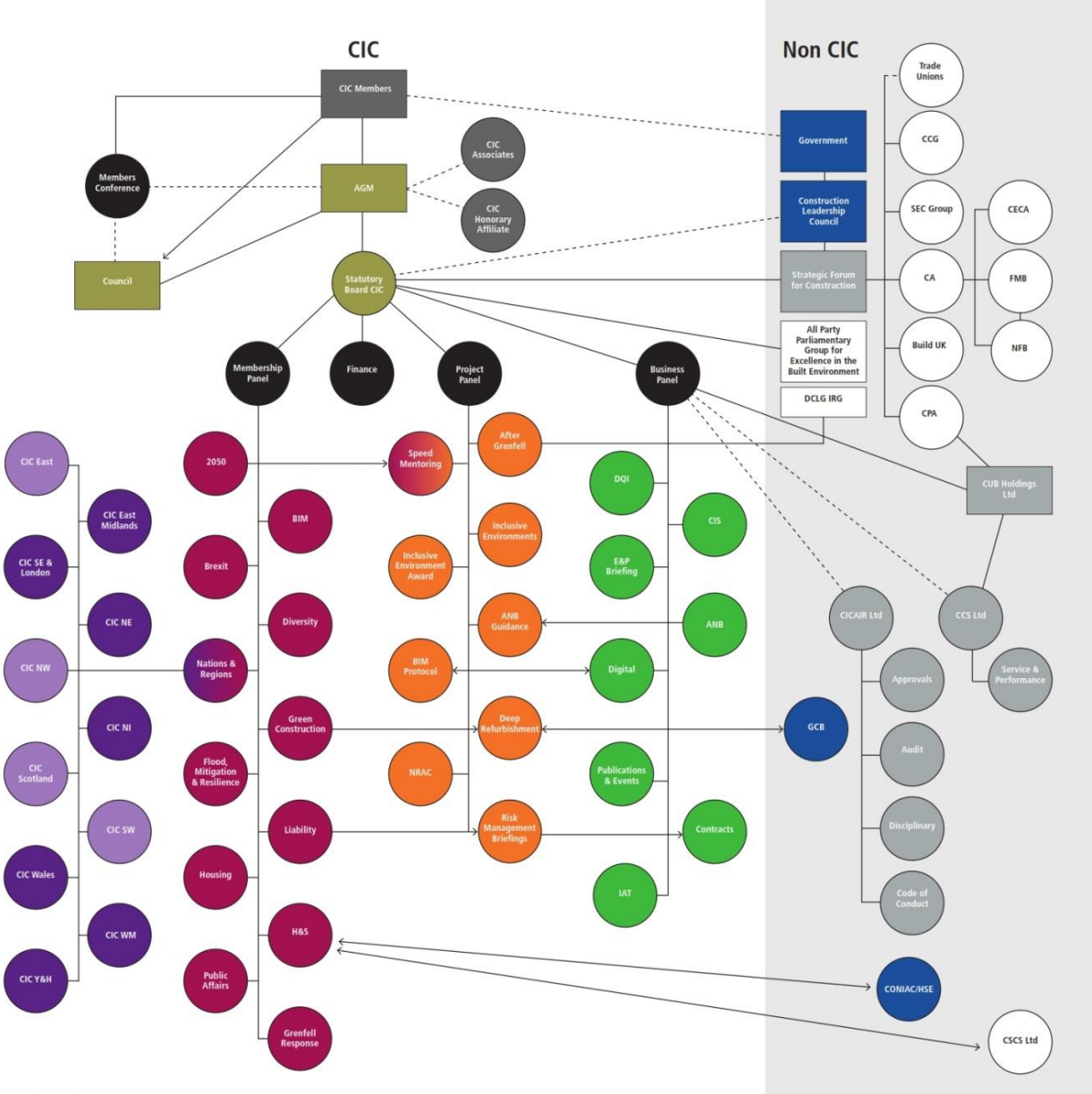
Progress of business-based activity will be reported to subsequent meetings of the Business Panel.

The Business Panel will be chaired for two consecutive years by the outgoing Chairman in his/her second year of office and the outgoing Deputy Chairman. The incoming Deputy Chairman/the Chairman in his/her first year of office; the Chief Executive and the Honorary Treasurer/Finance Director will be ex-officio members.

Membership of the Business Panel will be appointed annually by the Board of CIC, to include a at least four representatives of Members who are independent of the business interests within the remit of the project (ie not the Chairman or Secretary of any specific business activity).

The Chairman and Secretary of each CIC business, will be invited to attend meetings of the Business Panel as observers.

CIC Organisational Chart



CIC Committees/Panels

CIC has various committees and panels run by **Champions**, who report to either the **Membership Panel, Business Panel or Project Panel**.

Our committees create policy, debate, investigate, promote and report on a range of industry initiatives and issues, which are designed to educate, assist and enhance the work experience for employees, employers and professionals in the sector.

Members are welcome to nominate a representative to join any of the following panels.

Associate Members are invited to nominate representatives for groups in which they have specific expertise.

- 2050 Group
- BIM Forum
- Diversity & Inclusion Panel
- Flood Mitigation & Resilience Panel
- Finance & Governance Committee
- Green Construction Panel
- Grenfell Response Panel
- Health & Safety Committee
- Housing Panel
- Liability Panel
- Public Affairs Panel
- Nations & Regions

CIC 2050 Group (Chair: Christine Leigh)

The CIC 2050 Group comprises young dynamic industry professionals who represent a wide range of disciplines across the built environment.

The Group's vision is to provide a collaborative forum and platform for members of all construction disciplines and

professional bodies to develop ideas, share knowledge and promote advancement of sustainable industry initiatives with a view to achieving a carbon neutral construction industry by the year 2050.

Key Objectives:

Maintain representation within the Group of all key professional disciplines.

Bridge the divide between the current generation of industry leaders and the future generation of industry professionals.

Provide clear representation and speak with an integrated voice for future generations.

Be an active forum that offers unique perspectives and thought leadership to promote more sustainable strategies and practices within the industry.

Demonstrate the changing image of construction, including diversity, equality and an attractive career for future professionals.

Share knowledge, promote sustainability initiatives and disseminate information to help positively shape the future of the industry.

Contribute to the current and future industry strategies and assist in their delivery; for instance, Construction 2025 via the Construction Leadership Council.

Building Information Modelling (BIM) Forum (Chair: Dale Sinclair)

CIC established the Building Information Modelling (BIM) Forum to take forward the BIM strategy paper published by the Department of Business Innovation and Skills in June 2011.

The objectives of the Government Construction Strategy are to reduce the whole life cost of buildings and infrastructure by 20% and to achieve the government's targeted reductions in carbon dioxide emissions.

In order to achieve their objectives, all government departments need to enhance the briefing process, facilitate consistent decision-making using consistent information at key project stages and to measure the performance of the construction over its lifetime.

The government construction requirement is for all government departments to obtain similar relevant information at defined work stages in order to inform decision-making on procurement of all projects over an agreed threshold monetary value.

The Cabinet Office BIM Steering Group requested the engagement of the CIC BIM Forum to understand the information requirements of the government departments.

The CIC BIM Forum contributed to the definition of the information required during both capital and operational expenditure and to ensure that broad indicators of design, construction and operational quality are embodied in the "data drops".

Since this phase of the work has now been completed, the BIM Forum now continues to meet to discuss the further development of BIM L2 and as point of liaison with the UK BIM Alliance and other bodies.

Diversity & Inclusion Panel (Chair: Maria Coulter)

The Diversity & Inclusion Panel's vision is to provide a collaborative forum and platform for members of all construction disciplines and professional bodies to identify and promote diversity policy and activities in the construction industry.

The Diversity & Inclusion Panel will innovate and lead to bring about cultural change in our industry.

Goals:

- Prepare a strategy to influence and engage with industry leaders to bring about a cultural change in attitudes to diversity, fairness and respect within our workplace(s)
- Develop a media plan to showcase positive images of construction as a means of attracting a diverse workforce to improve our image and fix our reputation
- Define what diversity means in practice and develop a model/guide with training programme for the workforce
- Attract and retain young people as the future leaders of our industry
- Open up career paths and provide ladders of opportunity

Objectives:

- Identify key industry role models and obtain media coverage
- Become the 'go to' organisation on diversity best practice, knowledge, research within construction built environment.
- Map diversity initiatives and champion these through our membership

- We will identify from our Panel champions for each stream of diversity
- Achieve government funding to deliver the CLC action A2
- Signpost to careers resource packages for teachers, advisers (CBE media promotion)
- Organise a 'Diversity means business event'

Flood Mitigation & Resilience Group (Chair: Sue Illman)

This group was formed in 2015, to consider how to promote further awareness of the APPGEBE Commission Living with Water Report.

There is a wide range of initiatives that are being discussed at the FMP; in part a response to the current status of flooding with government, where it remains a high-profile item on the agenda for Defra and MHCLG, but also for a wide range of in-house committees and associated organisations. These include the Adaptation Sub-Committee to the Committee for Climate Change and the National Infrastructure Commission.

Grenfell Response Panel (Chair: Turloch O'Brien CBE)

In the aftermath of the Grenfell fire tragedy [14 June 2017], the Council agreed to establish a panel of Members' experts to advise on all issues relating to the fire and on the independent government-led and industry-led responses.

The Panel will oversee the development of a submission to the Grenfell Public Inquiry.

Finance & Governance Committee (Chair: Jo Watkins)

The CIC Finance & Governance Committee will advise the Honorary Treasurer and Chief Executive and Honorary Treasurer on all issues of CIC financial policy relating to membership subscriptions by reference to the resources available from member associations and institutions.

Terms of Reference for the Finance & Governance Committee

- to propose budgets for approval;
- to monitor income and expenditure against approved budgets; and
- to propose membership subscriptions; and
- to recommend and review governance policies for the Board to agree; and
- to maintain and manage the CIC Risk Register for the Board to agree.

Membership of the Finance & Governance Committee will be agreed by the Board and will include at least five representatives of Full Members.

Green Construction Panel (Chair: George Adams)

The essence of the CIC Green Construction Panel is the encouragement of the need to develop a sustainable society through energy and water, natural resource conservation addressing the urgent need to learn how to improve our existing urban environments.

The terms of reference of the Green Construction Panel include:

- Advise the Membership Panel and Board, on issues relating to sustainability, carbon reduction and all other green construction issues
- Link and co-ordinate the green construction activities of CIC members and other associated bodies of the construction industry, and in particular, act as an interface with the Green Construction Board
- Identify and promote green construction policy and activities in the construction industry, to benefit society. Encourage new thinking, inter group relationships, provide support to new initiatives that move towards sustainable built environment
- Improve knowledge of built environment sustainability and communication
- Develop core themes for CIC
- Provide alternative thinking
- Provide industry presentations on sustainability or energy efficiency in social media
- Promote CIC in publications, industry presentations and press articles
- Promote energy conservation

Health & Safety Committee (Chair: Gary Mees)

The CIC Health and Safety Committee provides a forum for health and safety representatives who are CIC members to meet, shape policy, discuss initiatives and develop responses on behalf of CIC.

Key Objectives:

- To promote the consideration of health and safety in every sector of the built environment at all stages of projects: planning, design, construction, management, maintenance and demolition.
- To identify and publicise examples of good practice.
- To link and co-ordinate the activities of CIC members in relation to health and safety.
- To represent CIC and its membership to key agencies such as the Health & Safety Executive, CONIAC, CONIAN and CSCS.
- To promote health and safety risk management in all disciplines of education within the built environment.
- To hold under review legislative developments in the UK and in Europe.

Housing Panel (Chair: Professor Anthony Crook)

The Housing Panel will specifically have a co-ordinating role for the industry's ongoing stewardship of **More homes, fewer complaints**; the Report from the Commission of Inquiry into the quality and workmanship of new housing in England, published in July 2016; and for other issues concerning housing.

Liability Panel (Chair: Sarah Lupton)

CIC's work in the area of contracts, insurance and legal liability issues is undertaken by the Liability Panel, one of CIC's longest running committees. The panel has representatives from CIC's membership, the legal professions and

specialist insurers. Members of the Liability Panel meet five times a year and in addition to the main committee, there are also smaller sub-groups which are set up to enable the Liability Panel to provide a rapid response to a fast moving area.

Key Objectives:

- Consider liability, legal and insurance issues that affect CIC's members.
- Keep CIC's members informed about such issues and publish guidance.
- Draft and publish standard form contract documentation for consultants.
- Campaign for changes in proposed or existing law.
- Work with other construction industry bodies to achieve these ends.

Public Affairs Panel (Chair: Rt. Hon. Nick Raynsford)

The purpose of the CIC Public Affairs Panel is to articulate, co-ordinate and promote the joint views of the construction professions and allied bodies in respect to a wide range of issues which affect the built environment. The main function of the Panel is to act as a two way channel by informing members of major developments in economic and policy matters and by providing a forum for responses to Government consultations.

It has been agreed that the panel **will not** meet unless required.

Key Objectives:

- To raise and maintain CIC's profile to ensure that it is seen as an authority on issues in relation to the built environment.
- To assist in the preparation of policy papers and consultation responses.
- To co-ordinate members' public affairs activities where possible and appropriate.
- To assist in handling the media.

Nations & Regions (Chair: John Nielsen)

CIC has developed a regional network throughout the nine English regions, Wales, Scotland and Northern Ireland through its Regional Committees.

The aim of the Nations and Regions is to provide a single voice for the industry in discussions with local members and interested parties to establish a network of organisations that consider issues relevant to the region and to promote public awareness of the construction industry.

At local level the CIC Regional Committees provide an influential, collective voice for the Built Environment and creates a valuable platform for member organisations to share their current themes and priorities and facilitates the opportunity for joint initiatives.

Committees are currently active in most English regions, Wales and Northern Ireland and Nations and Regions chairs meet quarterly with CIC to discuss the activities within the region and any current issues they feel need addressing at a national level.

CIC does not wish to duplicate existing activity in the regions, and so where possible, is working with existing pan-industry organisations to produce a cohesive voice.

External Representation

Construction Leadership Council [CLC]

The Construction Leadership Council was originally formed by the coalition Government to develop and implement the **Industrial Strategy**.

The CIC was directly represented on the CLC through its Chairman. The work of the CLC was managed by a Delivery Group on which the CIC Chief Executive sat.

The CIC also employed the Chief Construction Adviser who was then seconded to BIS and the Cabinet Office. The CCA was the principal officer of the CLC.

Following the 2015 General Election, the CLC was reconstituted and the role of the CCA was abolished on 1 December 2015. The Delivery Group was abolished and Andrew Wolstenholme replaced Sir David Higgins as the industry co-chair of the CLC (alongside the Minister with responsibility for construction) and the membership was reduced.

The CLC has a number of work streams, including Skills, Business Models and Procurement, Exports, Innovation and Green Construction.

CIC is represented on a number of these work streams and provides the secretariat for the Procurement work streams.

Ann Bentley, a member of the CLC, sits as an Advisor on the CIC Board.

Industry Response Group [IRG]

In the aftermath of the Grenfell fire tragedy, the MHCLG set up the Industry Response Group which meets regularly.

The CIC CEO is a member of the IRG and chairs a sub-group on Competence.

Green Construction Board [GCB]

The Green Construction Board is a joint industry/government body set up in response to the Innovation and Growth review established by Lord Mandelson in 2009. It has survived three changes of government since that time.

For a number of years, CIC administered the budget for the GCB under an Industrial Development Grant, which financed a number of low carbon initiatives (including the Low Carbon Route Map). This funding was exhausted in 2015.

The Chair of the CIC Green Construction Panel, currently **George Adams** (former President of CIBSE) represents CIC on the GCB.

All-Party Parliamentary Group for Excellence in the Built Environment [APPGEBE]

The All Party Parliamentary Group for Excellence in the Built Environment primary remit is to present a holistic and overarching view from all sectors involved in the planning, design, construction, management and maintenance of the built environment. The built environment encompasses all forms of building (housing, industrial, commercial, hospitals, schools, etc.), and civil engineering infrastructure, both above and below ground and includes the managed landscapes between and around buildings.

The APPG for the Excellence in the Built Environment seeks to work closely with other All-Party groups representing particular sectors of the built environment, such as architecture and planning, climate change, infrastructure, building, highway maintenance and gas safety. It is committed to investigate all current issues relating to the built environment and to engage parliamentarians and other serious commentators in looking at those major strategic issues affecting the built environment, which impact upon the lives of every constituent.

The Group functions mainly through an annual Commission of Inquiry, which is run very much on similar lines to a Select Committee, apart from the fact that the Commission is balanced between parliamentary members and industry experts. The latter are recommended by the CIC, which provides the authorship for the report and the Secretariat for the Inquiry.

Leading parliamentary members of the group are The Earl of Lytton, Lord Best and Helen Hayes MP.

So far, the group has conducted five Inquiries and published the following reports:

2012 - Inquiry into achieving best value in the procurement of construction work ***A Better deal for public building***

2013 - Inquiry into sustainable construction and the Green Deal ***Re-energising the green agenda***

2014/15 - Inquiry into flood resilience of the future ***Living with water***

2016 - Inquiry into the quality of new build housing in UK ***More homes fewer complaints***

2017 – Inquiry into the impact of ***BREXIT on future skills*** needs in the construction industry and the built environment professions.

2018 - Inquiry into the ***Better redress for homebuyers – How a New Homes Ombudsman could help drive up standards in housebuilding and improve consumer rights.***

Construction Industry Advisory Committee, Health & Safety Executive [CONIAC]

The Construction Industry Advisory Committee (CONIAC) advises the Health and Safety Executive (HSE) on the protection of people at work (and others) from hazards to health and safety within the building, civil engineering and engineering construction industry.

Its membership is tripartite, providing representation from key industry stakeholders (including SMEs). Its strategic work helps the industry deliver the challenging RHS targets it set at the 2001 Construction Summit, and helps to secure close links between the industry and HSE.

CONIAC was reconstituted at the beginning of 2013 with a refreshed membership. The new approach reflects the desire of HSE to work in partnership with intermediary groups in the construction industry, to take forward the new HSE Strategy. The aim is to take forward new ways of working with the constituencies represented on CONIAC in order to deliver the Strategy and the Revitalising Health and Safety targets within those constituencies.

CIC represents the professional bodies on this statutory committee by **Gary Mees**, CIC H&S Champion; and **Tony Putnam** CIC H&S Deputy Champion.

Following recent reconstitution of CONIAC, CIC provides secretariat for the newly formed work stream: “Keeping pace with change” working group.

Construction Industry Advisory Network (CONIAN)

The Health & Safety Executive set up an advisory network (in Dec 2017) to help work with the construction industry to improve workplace safety.

The Construction Industry Advisory Network (CONIAN), provides a platform for the dissemination of good practice and behaviour. Its establishment follows the reconstitution of the Construction Industry Advisory Committee (CONIAC) earlier in 2017, which advises the HSE and other relevant stakeholders on developments and risks relating to health and safety in the construction industry. CONIAN will create a platform for the industry to provide information to CONIAC and to promote information produced by HSE.

Construction Skills Certification Scheme [CSCS]

CIC is not an owner of the CSCS but the Council represents professional bodies on the board of the CSCS, through the appointment of a representative, currently **David Watson**, who reports to the Health & Safety Committee and the CIC Board.

Construction and the Built Environment Education Advisory Committee

CIC’s E4BE (Education for the Built Environment) group merged with the 14 to 19 Advisory Committee for Construction and the Built Environment Education in March 2017. The new group renamed as the **Construction and the Built Environment Education Advisory Committee** is chaired by Roy Cavanagh MBE.

The committee includes membership drawn from a range of organisations representing the breadth of the construction and built environment education.

The committee aims to provide a single voice for construction and the built environment in relation to learning and education. It is not funded by the UK government and operates entirely on voluntary efforts and employers who have chosen to invest their time in it. The current sponsors of the committee are ICE, CIOB and RICS. The committee is focused on providing a public voice for those with a legitimate interest in construction and the built environment education. Its role includes the provision of strategic direction for a programme of work to support the definition, recognition, use and value of standards for education in construction and the built environment. It has produced a range of education standards (aimed at 14 to 19 learners) that covers the breadth of construction and the built environment.

The standards include core standards (design, create and value and use of the built environment) and a range of specialist standards including BIM. The standards are currently under review to ensure that they are up to date and valued by employers, the professions, education and others.

CIC has appointed **Aled Williams** (UCEM) as CIC Education Champion to act as a conduit between the wider membership and this Committee and he will report the interests related to education and CPD to the CIC Board.

Inclusive Environments Round Table

The Inclusive Environments Round Table meetings occur twice yearly and are co-chaired by Ministers from DWP and MHCLG. The CIC is represented on this group by **Tony Burton** and the **Chief Executive**.

Government Construction and Infrastructure Stakeholder Group

CIC represents the professional bodies on this Cabinet Office Committee. Professor Tim Broyd represents CIC on the Group.

UKAS Policy Advisory Forum

CIC has two seats on the Forum, representing the professional bodies. CIC is currently represented by **Hywel Davies** (CIBSE) and **Paul Everall** (LABC).

Business Based Activities

CIC offers a broad spectrum of **professional services** which includes:

Adjudication

Adjudication is a process designed to help resolve disputes cheaply and efficiently. Section 108 of the Construction Act (or the Housing Grants, Construction and Regeneration Act 1996 in full), provides parties to a contract with a right to a legal statutory right to resolution by adjudication. If the contract does not contain an adjudication procedure then the parties may apply to CIC to nominate an adjudicator from the CIC Register of Adjudicators.

CIC is also a leading Adjudicator Nominating Body (ANB) accepting applications from adjudicators who are registered with CI Arb, CIOB, ICE, RIBA, RICS and TeCSA.

Contact: Chi Wong (cwong@cic.org.uk)

Appeals Tribunal

CIC has established an Independent Appeals Tribunal service for its member bodies to meet the requirements of the Human Rights Act 1998. All members of the Construction Industry Council have the option to subscribe to the service but only subscribing members are able to use it.

Individual members of professional bodies may use the Tribunal for appeals against decisions regarding membership and decisions of the disciplinary body of their professional body. The Appeals Tribunal may be used in full, or in part, at the discretion of the subscribing member, subject to their own requirements. The Tribunal cannot be used in instances where the subscribing member's disciplinary body has found that there is no case to answer.

Contact: Chi Wong (cwong@cic.org.uk)

Approved Inspectors

As the body designated by the Secretary of State in England and Welsh Ministers in Wales, CICAIR Ltd maintains and operates the Construction Industry Council Approved Inspectors Register (CICAIR).

CICAIR Ltd is a wholly owned subsidiary of the Construction Industry Council (CIC) and the approval process it operates provides applicants with a route to registration as an Approved Inspector. Approved Inspectors registered with CICAIR Ltd are qualified to undertake building control work in accordance with section 49 of the Building Act 1984 and Regulation 3 and 5 of the Building (Approved Inspectors etc.) Regulations 2010.

The CICAIR application and assessment procedures were developed over the course of several years and involved the collaboration of experts drawn from across the membership of CIC and the then Department of the Environment.

The operations of CICAIR Ltd are overseen and managed by a Board of Directors that is appointed by CIC from a range of backgrounds and specialisms. The Ministry of Housing, Communities and Local Government (MHCLG) is now responsible for the Building Regulations and the Building (Approved Inspectors etc.) Regulations.

Contact: Scott McLew (smclew@cic.org.uk)

Construction Umbrella Bodies (Holdings) Ltd/Considerate Constructors' Scheme

The Construction Umbrella Bodies (Holdings) Company was established in 2000/1 to take ownership of the products that had been owned by the Construction Industry Board. CUB (Holdings) has two members; the CIC and the Construction Products Association, which each own 50% of the company.

Most of these holdings (publications) ceased to have any value, many years ago. However, CUB (Holdings) Ltd is the sole owner of the Considerate Constructors Scheme, which is a self-financing, independent organisation.

The CCS is managed by managing agents (currently Valewell Ltd) who report to a Board of Directors (CCS Ltd), which has been reconstituted to include the CIC Chairman and CEO as directors.

Construction sites, companies and suppliers voluntarily register with the Scheme and agree to abide by the Code of Considerate Practice, designed to encourage best practice beyond statutory requirements.

The Scheme is concerned about any area of construction activity that may have a direct or indirect impact on the image of the industry as a whole. The main areas of concern fall into three categories: the general public, the workforce and the environment. The Scheme should carry out inspections of registered sites and report on and mark them against the eight key areas listed in the Code of Considerate Practice and finally to reward the best performing sites.

For further information on CCS please go to the website: www.ccscheme.org.uk

Contracts

As the representative forum for the professional bodies, research organisations and specialist business associations in the construction industry the Construction Industry Council is in a unique position to draw upon this wealth of knowledge and experience to create Contracts suitable for the whole industry.

CIC has developed a number of contracts and standard forms of agreement in line with the work of our Liability Panel, these are periodically updated and only available from our website. All contracts, warranties and other publications are available via the CIC online shop.

Contact: (publications@cic.org.uk)

Design Quality Indicator (DQI)

Design Quality Indicator (DQI) is a process that enables every aspect of design quality to be assessed at each stage of the construction process, from inception to post occupancy analysis.

DQI empowers stakeholders to be actively involved, through structured workshops and online tools, with construction and design professionals, to set targets against which to review design quality. The workshops are professionally mediated by an accredited DQI Facilitator.

- DQI focuses the design and construction team on the needs of the end user as it;
- creates a sense of ownership by engaging users throughout the process;
- enables feedback and learning for future projects;
- generates a simple graphic profile that indicates the strengths and weaknesses of a design or existing building;
- provides an agenda for briefing and design reviews;

- provides benchmarking information in the form of Facilitator's Reports;
- and it helps to develop a more sustainable building.

DQI has been used on hundreds of projects since it was launched in 2002. It can also contribute to a building's BREEAM rating. For more information visit www.dqi.org.uk

Contact: Makis Peppas
(mpeppas@cic.org.uk)

Economic & Policy Briefings

The CIC Economic & Policy Briefings provide regular economic analyses, policy updates and comments on major commercial projects in construction industry.

The briefings bring together leading policy-makers, economists and senior industry players to discuss the current industry's economic position, policy topics and commercial projects, in an informal setting.

Briefings run six times a year with a minimum of three speakers. There is an opportunity to ask questions and to network afterwards.

Attendance to the briefings is open to anyone. (CIC Members receive a **free** annual pass, as well as additional discounted passes).

Contact: Kamila Tomaszewska
(ktomaszewska@cic.org.uk)

CIC Publications

CIC has a wide range of professional publications: documents, contracts, guides, reports, professional services surveys available to purchase or for **free** download.

- **CIC BIM Protocols** - *Free*
- **CIC Consultants' Contract** package - £115.00
- **CIC Scope of Services** - £75.00
- **CIC Services Handbook** – £20.00
- **Collateral Warranty Purchaser/Tenant** - £25.00
- **Collateral Warranty Consultant/Employer** (PDF) - £25.00
- **Collateral Warranty Consultant/Funder** - £25.00
- **Contract for the Appointment of an Approved Inspector** (PDF) – *Free*
- **Model Adjudication Procedure – Fifth Edition** (PDF) - £20.00
- **Novation Agreement** - £25.00
- **Novation Agreement – Scottish Version** - £25.00
- **Supplemental Agreement – First Edition 2004** (PDF) – *Free*
- **Supplemental Agreement – Scottish Version** (PDF) – *Free*
- **Users' Guide to Adjudication** (PDF) – *Free*
- **Users' Guide to Adjudication in the Republic of Ireland** (PDF) - *Free*

Further publications and reports are available at www.cic.org.uk/shop

CIC Board 2018/9

CIC Board comprises up to 12 directors appointed by CIC Council:

Chairman	Professor John Nolan
Deputy Chairman	Stephen Hodder MBE
Chief Executive	Graham Watts OBE
Honorary Treasurer	Jo Watkins
Chairman of CICAIR Ltd	The Rt Hon Nick Raynsford
Director Membership	Noel Farrer
Director Membership	Nick Mead
Director Membership	Dale Sinclair
Director	Tony Burton
Director	Louise Clarke
Director	Maria Coulter
Advisor	Ann Bentley

Champions & Chairmen of CIC Committees/Panels:

BIM Forum	Dale Sinclair
Diversity & Inclusion	Maria Coulter
Education	Aled Williams
Flood Mitigation & Resilience	Sue Illman
Green Construction	George Adams
Grenfell Response	Turlogh O'Brien CBE
Health & Safety	Gary Mees
Housing	Professor Anthony Crook CBE
Liability	Sarah Lupton
Nations & Regions	John Nielsen
Research, Innovation & Knowledge (& Economy)	Simon Rawlinson
2050 Group	Christine Leigh

Business Activities

Adjudication	Niall Lawless
Appeals Tribunal	Turlogh O'Brien CBE
CCS Ltd	Isabel Martinson MBE
CICAIR Ltd	Rt. Hon. Nick Raynsford
Digital Board	Dale Sinclair
DQI Management Board	Lynne Ceeney

CIC Chairman

Professor John Nolan

BSc, MSc, DEng(Hon), C.Eng, FStructE, FICE



John is Chairman of Nolan Associates, Consulting Civil and Structural Engineers. He is also a Visiting Professor at the University of Birmingham, Chairman of a property company, non-exec director of a power company, technical advisor to the Board of Bournville Village Trust and is a Past President of the Institution of Structural Engineers. John is a Fellow of the Institution of Structural Engineers and also the Institution of Civil Engineers. He has over 40 years experience in the construction Industry initially as a contractor, but predominantly as a consultant, and has been responsible for the civil and structural engineering design of projects in almost all sectors of the built environment.

His particular interests are innovation, value engineering, the waste generated by the public sector procurement process and offsite fabrication.

He is passionate about the quality and relevance of the knowledge that Civil and Structural Engineering students have when they graduate and has spoken widely on this topic. This led to his appointment as a Royal Academy of Engineering Visiting Professor of Innovation at the University of Birmingham

John has been married to his wife Valerie since they were students and they have a son who is a Chartered Surveyor and two daughters, one of whom is also an Engineer. They have five young grandchildren who occupy much of his spare time. His main sporting interest is Rugby, having been a player and coach at Moseley Rugby Club, where he is also a Vice President.

CIC Deputy Chairman

Stephen Hodder MBE

BA(Hons) BArch(Dist) DArts PPRIBA Hon AIA FRSA



Stephen Hodder was educated at the School of Architecture, University of Manchester, where he gained a Distinction in the Bachelor of Architecture degree. Following University he joined Building Design Partnership in 1981 and became a member of the Royal Institute of British Architects in 1982.

He has been in practice since 1983 and in 1992 formed Hodder Associates which received the most important award in British Architecture for a single building, the inaugural Stirling Prize for Architecture for the Centenary Building, University of Salford. The Practice has now won over forty major awards.

Stephen has been President of the Manchester Society of Architects, RIBA North West Region Chairman, and a member of the RIBA Awards committee. He is a past member of the Education Committee and Conservation Register Steering Group. He was RIBA President 2013-15, having previously been Vice President Membership, Nations and Regions.

Stephen has written and lectured widely, has been a visiting examiner at a number of schools of architecture and visiting Professor at the Birmingham School of Architecture and the Belfast School of Architecture.

He is currently external examiner at 'Ion Mincu' University of Architecture and Urbanism, Bucharest, University of Portsmouth School of Architecture and visiting Professor at the University of Salford, School of the Built Environment.

He regularly acts as an assessor for architectural competitions and awards and sits on the Design Review Panel for Places Matter! and formerly for CABE.

He was awarded an MBE for services to architecture in the Queens Birthday Honours List, 1998.

He received an honorary doctorate in 2006 from the Manchester Metropolitan University for his regional, national and international contribution to architecture and won the Roses Design Award of 'Architect of the Year' in the same year.

Stephen received an honorary fellowship from the University of Central Lancashire in 2013.

CIC Chief Executive

Graham Watts OBE

**BA(Hons), HonFRIBA, HonRICS, HonFCIBSE, HonFICWCI,
HonFBIID, HonMCIAT, HonFBEng, HonFFB, HonFCInstCES FRSA,
MCM**



Graham has been involved with CIC since 1989. Initially, as a member of the Council and its Executive Board, then as a Director, he was appointed Chief Executive and Secretary in October 1991.

Graham is responsible for the general policy and direction of the Council, for maintaining effective communication with Government, other external agencies and with members and for establishing and maintaining the CIC Secretariat and office.

He is an Honorary Fellow of RIBA, CIBSE, CABE, ICWCI, BIID, CICES and the Faculty of Building and an Honorary Member of the RICS and CIAT. He was awarded the President's Medal of the CIOB in 2000 and the Peter Stone Award of the Association of Building Engineers in 1996.

Prior to joining CIC, Graham was Chief Executive of the British Institute of Architectural Technologists (a member of CIC) from 1983. He is a Board member of several Trusts and Committees in the Construction and Built Environment sectors and was a Visiting Professor at the University of Northumbria for twelve years from 2000. He has been Secretary of the All-Party Parliamentary Group for Excellence in the Built Environment since 2010. He is a director of CIC, CICAIR Ltd, CUB (Holdings) Ltd, Constructionarium and the Considerate Constructor Scheme.

Graham had a long involvement in the sport of fencing and his competitive career culminated with a Commonwealth Medal in 1990. In 1992, he captained the British Sabre team at the Barcelona Olympic Games. He was the Manager of the British Fencing Team from 1996 and the Performance Director of the British Olympic Fencing Team for 10 years from 2000 to 2010, and Team Leader at the 2004 and 2008 Olympics Games.

Outside of CIC, he is an established international dance writer and critic. He is a member of The Critics' Circle Council, the UNESCO Dance Council, Dance UK and the Society of Dance Research. He has been Chairman of the Dance Section of the Critics' Circle since 2009 and of the National Dance Awards since 2010. In 2012, he was author of Daria Klimentová's biography "Agony and Ecstasy: My Life in Dance".

Graham received an OBE in the New Years Honours in 2008 for his services to the construction industry.

Honorary Treasurer

Jo Watkins



Jo Watkins was born in Swansea and now lives in South London. He is married with 2 children. He has an extensive understanding of the construction industry, working both as lead consultant and as part of a consultant team, as well as on occasions, acting as client.

He is a chartered landscape architect and is a Past President of the Landscape Institute. He served on the Landscape Institute Council for many years and was Honorary Treasurer between 2002 and 2006. He continues to sit on the LI Awards committee and the Editorial Advisory Board for 'Landscape' magazine.

He studied at Thames Polytechnic and qualified as a landscape architect in 1987, after which he has spent all of his career in private practice, latterly as a partner in Watkins:Dally from which he retired in 2010. The practice developed a strong track record in public realm and campus design for which they won a number of awards.

He has held a number of teaching positions including at the University of Greenwich, London Metropolitan University and at the Bartlett School of Architecture. He has contributed to a number of publications. Jo sits on the Advisory Board to the Dean of the school of Architecture, Design and Construction at the University of Greenwich.

He is a member of the RIBA Planning Group. He is Chair of the Twinkle Park Trust which for many years has managed a community park in Deptford, and is Chair of Governors at Brooklands Primary School. He is also sits on the Advisory Board for the Greenwich World Heritage Site.

He is a director of Estateways plc, a property development and investment company based in South Wales.

He watches Swansea City whenever he gets the chance. He is a member of CAMRA.

CICAIR Chairman

The Rt Hon Nick Raynsford



Nick Raynsford was the Member of Parliament for Greenwich and Woolwich from 1997-2015 (and previously for Greenwich 1992-1997).

He served as a Government Minister from 1997 initially in the Department of the Environment, Transport and the Regions (DETR), holding responsibility for Housing, Planning and Construction as well as being Minister for London.

He was Minister for Local and Regional Government in the Office of the Deputy Prime Minister from 2001-2005, also holding responsibility for the Fire and Rescue Service and for Resilience Planning.

He was made a Privy Councillor in the 2001 New Year's Honours. He left the Government in 2005.

Nick was Shadow Minister for Housing and Construction from 1994 and Front Bench Spokesperson for London from 1993. He was a member of the House of Commons Environment Select Committee from 1992-1993.

Nick was Member of Parliament for Fulham from 1986-1987, and was a Councillor in the London Borough of Hammersmith and Fulham from 1971 until 1975.

He was Director of SHAC, the London Housing Aid Centre from 1976-1986 and Director of Raynsford and Morris, Housing Consultants from 1987-1992.

Nick Raynsford is currently President of the Town and Country Planning Association and Director of Constructionarium. He is Chairman of Triathlon Homes, the NHBC Foundation, the Tideway Reporting Board and the Iceni Commission on Sustainable Development. He is Honorary Vice-Chairman of the Construction Industry Council. He is a Non-Executive Director of Hometrack, and the Fire Protection Association, serves on the Pocket Advisory Board and is a Trustee of Open City.

He is an Honorary Fellow of the Institution of Civil Engineers, the Royal Town Planning Institute, the Royal Institute for British Architects, the Institute of Structural Engineers, the Association of Building Engineers and the Society for the Environment. He is an Hon Member of the Royal Institution of Chartered Surveyors, the Chartered Institute of Housing and the Worshipful Company of Constructors.

He has a degree in History from the University of Cambridge, a Diploma in Art and Design from Chelsea School of Art, and an Hon Doctorate of Business Administration from the University of Greenwich.

Nick's book 'was published by Policy Press in July 2016.

Directors

Louise Clarke

Louise is Group Sustainability Manager at Berkeley Group. She is the Deputy Chairman for the CIC Diversity & Inclusion Panel and past Chair of CIC's 2050 Group.

She has over 8 years experience of working in the construction industry on sustainability best practice and cross industry collaborations to produce best practice. She has specialised in sustainability and throughout her career and has a keen interest in place-making, stemming from her Masters in Urban-Design.

Maria Coulter

With a career spanning over 20 years in the industry as a Quantity Surveyor, Project Manager and Risk Manager, Maria's interest in personal development led her to become a qualified personal and business coach in 2012.

In 2014 Maria started her own business, Construction Coach providing Executive and Business Coaching to organisations and individuals around performance, team building, strategy and business planning. Maria is also an APC Coach and delivers leadership and management training to the construction industry.

As well as being a regional board member for the RICS, Maria is Chair of the Construction Industry Council for the East Midlands and Construction Ambassador for the D2N2 Local Enterprise Partnership.

Maria is the Chairman of the CIC Diversity & Inclusion Panel.

Noel Farrer

Noel Farrer is a landscape architect and urban designer and founding director of Farrer Huxley Associates.

Over 30 years experience working as a landscape architect in both public and private sector. All of his work is founded on the belief that landscapes make an essential contribution to the generation of sociable and sustainable communities. Much of the work that Noel has delivered over the past 18 years has been category 'firsts' and has won awards for their exemplary contribution to the industry as a whole.

Clients include GPE, Cathedral Group, Peabody Trust with a focus on projects ranging from residential, education, parks and public realm. Noel was President of the Landscape Institute from 2014 – 2016. He sits on the (MHCLG) Design Advisory Panel for Housing, DC CABE's Infrastructure and Design Panels as well as being chair and panel member on a number of regional panels. Noel is a regular columnist and visiting lecturer on landscape architecture.

Nick Mead

Nick Mead joined Haden Young as an Apprentice in 1978. He progressed within Haden working on many diverse projects including Pharmaceutical and Manufacturing developments. He left as an Engineering Manager in 1995 and joined WSP London as an Associate Director, becoming a Director shortly after. Nick joined ACDP in November 2000 as an Associate Director and was shortly promoted to Director and then Managing Director. Subsequent to a role with Imtech as their Engineering Director for the

London business he is now operating independently as Nick Mead Associates.

His roles in CIBSE have included Board Member, Honorary Treasurer, Chair of the CIBSE Patrons and Chair of the CIBSE Industry and Education Group.

Dale Sinclair

Dale Sinclair is AECOM's Director of Technical Practice, Architecture responsible for EMEA (Europe, Middle East and Africa). Dale's core expertise is the delivery of large scale projects. He has experience in delivering health, leisure, education, offices and retail projects as well as developing the processes required to successfully deliver these on time, programme and to the client's quality requirements. He was previously a Director of Dyer an international architectural practice based in London and was also an Associate Director at BDP.

He is passionate about delivering projects more effectively, believing that the lead designer's role is central to this goal. His publication in 2011 for RIBA Enterprises: Leading the Team: An Architects Guide to Design Management is aimed at those who share these objectives. He regularly speaks on the RIBA Plan of Work 2013 and BIM.

He is RIBA Vice President responsible for Practice and Profession, an RIBA Trustee and Councillor, and is currently a Director of RIBA Insurance Agency. He was the chair of the RIBA Large Practice Group from 2007 – 2013 and the editor of the BIM Overlay to the RIBA Outline Plan of Work 2007. As well as editing the new Plan of Work 2103, Dale chaired the RIBA task group responsible for developing it, assisted in the development of the on-line tools and authoring the supporting publications including the Guide to using the RIBA Plan of Work 2013 and Assembling a Collaborative Project Team. He is also a member of the CIC BIM

Forum and on the board of BuildingSMART UK.

Ann Bentley Advisor to the Board

Ann is a global director and global chairman of Rider Levett Bucknall, which employs more than 450 staff in the UK and 3,600 worldwide, operating in over 40 countries. Ann is responsible for the company's strategic direction, cohesion and governance.

Ann is a member of the UK Government's Construction Leadership Council, a member of the CBI's Construction Council and the MHCLG Independent Expert Advisory Panel on Fire Safety. She is a Chartered Member of the Institution of Civil Engineers (MICE), a Fellow of the Royal Institution of Chartered Surveyors (FRICS) and holds an MBA from Henley Management College.

In the academic world Ann is a visiting Professor of Business Management, Project Management and Quantity Surveying at Birmingham City University and a visiting lecturer in the School of Construction Management and Engineering at Reading University. A judge for a number of industry awards, she is also a regular commentator in national and trade media and speaker at national and international construction conferences, recently speaking at events in Kazakhstan and Shanghai.

CIC Staff

Graham Watts OBE – Chief Executive

gwatts@cic.org.uk

Ensures that the CIC fulfils its objects in accordance with its Memorandum of Association. Responsible for the development and continuous good practice of the welfare of CIC and its members.

Responsible for the administration of the Board.

Eve Farraud BEM – Executive Assistant (Mon-Thurs)

efarraud@cic.org.uk

0207 399 7402

Executive Assistant to Graham Watts & Office management.

Scott McLew – Chief Operating Officer & Registrar, CICAIR Ltd

smclew@cic.org.uk

0207 399 7422

Responsible for the Approved Inspectors Register.

Makis Peppas – DQI Manager

mpeppas@cic.org.uk

0207 399 7409

Managing the programme; responsible for DQI issues and DQI Facilitators.

Liz Drummond – Events, Communications & Marketing Manager (Tues-Fri)

ldrummond@cic.org.uk

0207 399 7430

Events Management, Marketing & Communications. Website & Social Media. Press Enquiries. Nations & Regions.

Kamila Tomaszewska – Policy, Committees & Events Co-ordinator (Mon-Thurs)

ktomaszewska@cic.org.uk

0207 399 7414

Co-ordinating committee events, parliamentary involvement and policy; APPG EBE, Economic & Policy Briefing, Health & Safety Committee, Flood Mitigation and Resilience Panel, BIM Forum and Green Construction Panel.

Karen McGovern – Marketing & Projects Co-ordinator (part-time)

kmcgovern@cic.org.uk

0207 399 7412

Marketing & Communications and oversees the Diversity & Inclusion Panel, 2050 Group, Housing Panel and CIC Member Roundtables.

Laura Russell – Assistant Registrar, CICAIR Ltd

lrussell@cic.org.uk

0207 399 7403

Assists with Approved Inspectors issues.

Chi Wong – Office Administrator

cwong@cic.org.uk

0207 399 7423

Provides office administration, as well as looking after Adjudications, Independent Appeals Tribunals, Finance & Governance Committee, DQI and NRAC queries.

Maureen Bali – Bookkeeper/Accounts Assistant (part time)

mbali@cic.org.uk

0207 399 7408

Provides financial assistance to CIC.

Gintare Barzdyte – Finance Assistant (Mon & Wed)

gbarzdyte@cic.org.uk

0207 399 7406

Provides financial assistance to CIC.

General CIC main tel: 020~7399 7400
DQI main tel: 020~7399 7424

Construction Industry Council
The Building Centre
2nd Floor
26 Store Street
London
WC1E 7BT

Twitter: @CICtweet
LinkedIn.com/CIC

CIC Meeting Dates 2019

DATE	TIME	MEETING	VENUE
Tuesday, 15 Jan	10.30-12.30	Diversity & Inclusion Panel	CIC
Wednesday, 16 Jan	10.30-12.30	Business Panel	CIC
Wednesday, 16 Jan	1.00-3.00	CIC BOARD	CIC
Wednesday, 23 Jan	11.00-1.00	Flood Mitigation & Resilience Panel	CIC
Tuesday, 5 Feb	2.00-5.00	Health & Safety Committee	CIC
Wednesday, 6 Feb	11.00-1.00	Housing Panel	CIC
Thursday, 7 Feb	10.30-1.00	CICAIR Management Board	CIC
Tuesday, 12 February	1:00 – 2:30	Green Construction Panel	Spie Offices
Wednesday, 13 Feb	10.00-12.00	Membership Panel	tbc
Thursday, 14 Feb	9.30-ALL DAY	Independent Appeals Tribunal	CIC
Friday, 15 Feb	2.00-4.00	Liability Panel	CIC
Tuesday, 19 Feb	9:30 -12:30	Economic and Policy Briefing	ICE
Tuesday, 19 Feb	9.00-12:30	CCS Board	CIC
Thursday, 28 Feb	10.30-1.30	Independent Appeals Management Board	CIC
Friday, 1 Mar	10:00 – 12:00	BIM Forum	CIC
Monday, 4 Mar	2.30-4.00	Finance & Governance Committee	CIC
Wednesday, 6 Mar	10.30-12.30	Project Panel	CIC
Wednesday, 6 Mar	1.00-3.00	CIC BOARD	CIC
Thursday, 7 Mar	10.30-12.00	BEPE Project Board	CIC
Wednesday, 27 Mar	10.30-12.30	Nations & Regions Chairmen's Meeting	CIC
Wednesday, 27 Mar	2.30-5.00	COUNCIL	tbc
Tuesday, 9 Apr	9:30 -12:30	Economic and Policy Briefing	ICE
Friday, 12 Apr	2.00-4.00	Liability Panel	CIC
Tuesday, 30 Apr	10.30-12.30	Diversity & Inclusion Panel	CIC
Wednesday, 1 May	10.30-12.00	Business Panel	CIC
Wednesday, 1 May	1.00-3.00	CIC BOARD	CIC
Wednesday, 8 May	10.00–12.00	Membership Panel	tbc
Monday, 13 May	11.00-1.00	Flood Mitigation & Resilience Panel	CIC
Tuesday, 14 May	9:30 -12:30	Economic and Policy Briefing	ICE
Tuesday, 14 May	1:00 -2:30	Green Construction Panel	Spie Offices
Thursday 16 May	10.30-1.00	CICAIR Management Board	CIC
Tuesday, 21 May	11.00-1.00	Housing Panel	CIC
Thursday, 23 May & Friday, 24 May	5.00pm-10.30pm 9.00am- 2.30pm	CIC AGM & Dinner Members' Conference	tbc
Tuesday, 4 Jun	2.00-5.00	Health & Safety Committee	CIC
Wednesday, 5 Jun	12.30-4.00	CCS Board	CIC
Friday, 7 June	10:00-12:00	BIM Forum	CIC
Friday, 14 Jun	2.00-4.00	Liability Panel	CIC
Tuesday, 25 Jun	10.30-12.30	Nations & Regions Chairmen's Meeting	CIC
Tuesday, 25 Jun	2.30–5.00	COUNCIL	tbc
Wednesday, 3 Jul	2.30-4.00	Finance & Governance Committee	CIC
Thursday, 4 Jul	9.30-ALL DAY	Independent Appeals Tribunal	CIC
Thursday, 4 Jul	9.30-ALL DAY	CCS Annual Conference	tbc
Tuesday, 9 Jul	9:30 -12:30	Economic and Policy Briefing	ICE

Tuesday, 16 Jul	10.30-12.30	Diversity & Inclusion Panel	CIC
Wednesday, 17 Jul	10.30-12.00	Project Panel	CIC
Wednesday, 17 Jul	1.00-3.00	BOARD	CIC
Thursday, 18 Jul	10.30-1.30	Independent Appeals Management Board	CIC
Tuesday, 6 Aug	12.30-4.00	CCS Board	CIC
Thursday, 8 Aug	10.30-1.00	CICAIR Management Board	CIC
Monday, 9 Sept	11.00-1.00	Flood Mitigation & Resilience Panel	CIC
Tuesday, 10 Sept	1:00 – 2:30	Green Construction Panel	Spie Offices
Wednesday, 11 Sept	2.30-4.00	Finance & Governance Committee	CIC
Wednesday, 18 Sept	10.30-12.00	Business Panel	CIC
Wednesday, 18 Sept	1.00-3.00	BOARD	CIC
Thursday, 19 Sept	2.00-4.00	Liability Panel	CIC
Wednesday, 25 Sept	2.00-5.00	Health & Safety Committee	CIC
Thursday, 3 Oct	9.30-ALL DAY	Independent Appeals Tribunal	CIC
Tuesday, 8 Oct	11.00-1.00	Housing Panel	CIC
Friday, 11 Oct	10:00 – 12:00	BIM Forum	CIC
Tuesday, 15 Oct	9:30 -12:30	Economic and Policy Briefing	ICE
Wednesday, 16 Oct	10.00-12.00	Membership Panel	tbc
Thursday, 17 Oct	10.30-1.30	Independent Appeals Management Board	CIC
Monday, 21 Oct	10:00-12:00	Finance and Governance Committee	CIC
Tuesday, 5 Nov	10.30-12.30	Nations & Regions Chairmen's Meeting	CIC
Tuesday, 5 Nov	2.30-5.00	COUNCIL	tbc
Thursday, 7 Nov	10.30-1.00	CICAIR Management Board	CIC
Tuesday, 12 Nov	9:30 -12:30	Economic and Policy Briefing	ICE
Tuesday, 12 Nov	12.30-4.00	CCS Board	CIC
Tuesday, 19 Nov	1:00 – 2:30	Green Construction Panel	Spie Offices
Friday, 22 Nov	2.00-4.00	Liability Panel	CIC
Tuesday, 26 Nov	10.30-12.30	Diversity & Inclusion Panel	CIC
Wednesday, 27 Nov	10.30-12.00	Project Panel	CIC
Wednesday, 27 Nov	1.00-3.00	BOARD	CIC

