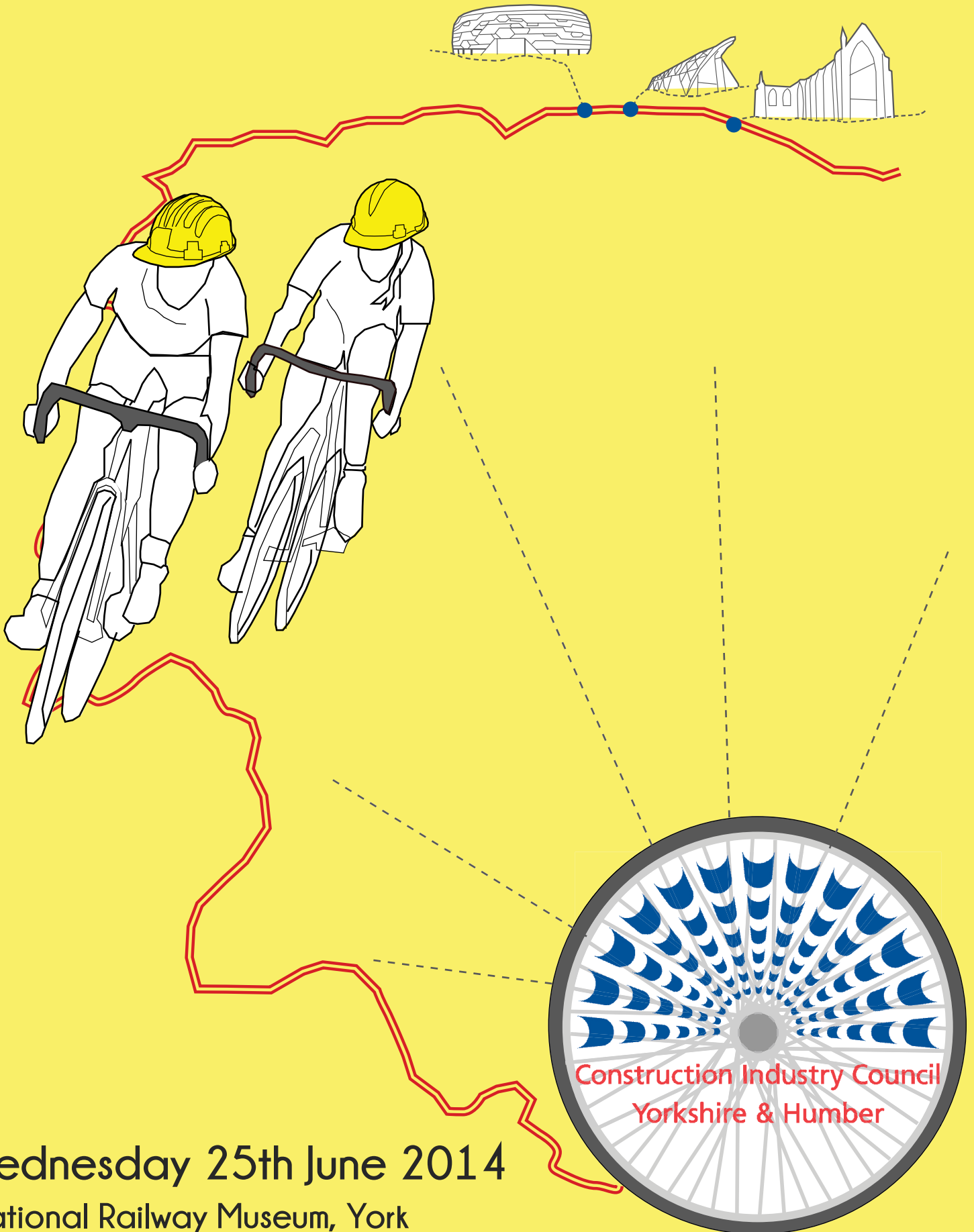


CIC Yorkshire & Humber 2014 Conference:

# Le Grand Tour de Yorkshire

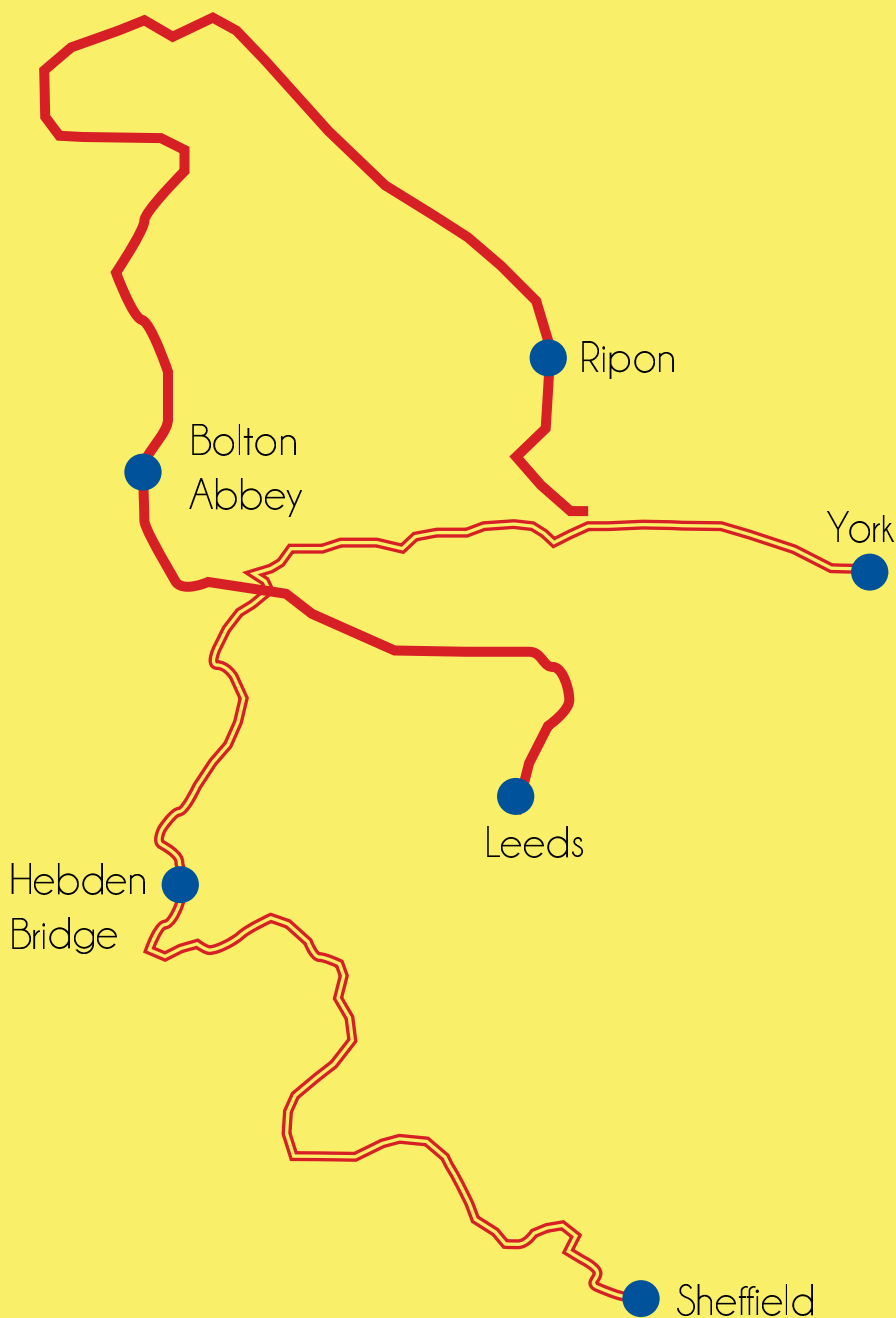


Wednesday 25th June 2014

National Railway Museum, York

Sustainable communities are places where people want to live and work. They meet diverse needs, are sensitive to their environment, safe and inclusive. But sustainable communities need to be built, and to this end, the construction industry plays a huge part, providing homes, infrastructure, jobs or social institutions. Whether it is the Bronze Age stone circles or modern stadia, construction is intrinsic to the creation of community. There is no better place to explore this than in Yorkshire, where evidence of community goes back to the prehistoric. As is often the case, what works well in Yorkshire has a profound impact on the country.

As the location of the Grande Departe, Yorkshire is also building a new type of community for the region, one that combines sport, tourism and media. By following the cycling route map - a new sort of neighbourhood plan – we will explore the type of communities Yorkshire had – and has –to offer from Roman roads to modern arenas, and ask what we can learn from what went before, and how we see the communities of the future.



### Yorkshire's backbone

Considering infrastructure as the backbone of a strong economy, Yorkshire's existing infrastructure and the future.

### Checkpoint Leeds: Leeds Arena – the face of the modern construction industry

Analysing arenas old and new, their technical challenges and how to meet the needs of communities.

### Checkpoint Ripon: How Religion Built the Region

Reflecting on the role of monasteries in Yorkshire, their pivotal roles in history and their future.

### Checkpoint York: Construction with a Conscience

Translating Joseph Rowntree's model village principals to today's communities.

### Checkpoint Bolton Abbey: The future of rural building

Providing new leases of life to redundant traditional buildings, whilst still maintaining local distinctiveness.

### Checkpoint Hebden Bridge: A lesson in reinvention

Learning from the reinvention of Hebden Bridge from a northern backwater to a vibrant suburb.

### Checkpoint Sheffield: The future

Sheffield is a lesson on how a city can be reborn through innovative regeneration. So are there ways in which the rest of the region can learn from the city?

£40 for delegates

£20 students

Sponsorship opportunities available

contact [enquires@cic.org.uk](mailto:enquires@cic.org.uk)

[www.constructionindustrycouncilyorkshireandhumber.co.uk](http://www.constructionindustrycouncilyorkshireandhumber.co.uk)



Follow us on Twitter:

@CIC\_YH



Construction Industry Council  
Yorkshire & Humber