

# CIC Membership Pack



## CIC Chairman

2016-2018	Professor John Nolan
2014-2016	Tony Burton
2012-2014	Jack Pringle
2010-2012	Gordon Masterton OBE
2008-2010	Keith Clarke CBE
2006-2008	The Rt Hon Nick Raynsford MP
2004-2006	Stuart Henderson
2002-2004	Turlogh O'Brien CBE
2000-2002	Michael Dickson CBE
1998-2000	Robin Nicholson CBE
1996-1998	Christopher Vickers CBE
1994-1996	Robin Wilson CBE
1991-1994	Sir Ian Dixon CBE
1988-1991	Sir Edmund (Ted) Happold

# Contents

- About CIC ..... 5
- CIC Members ..... 14
- CIC Organisational Chart ..... 16
- CIC Committees ..... 17
- External Representation ..... 22
- Business Based Activities..... 28
- CIC Board 2016 – 2017..... 31
- CIC Chairman..... 32
- CIC Deputy Chairman (2016-2017)..... 33
- CIC Chief Executive ..... 34
- Honorary Treasurer ..... 35
- CICAIR Chairman..... 36
- Directors ..... 37
- CIC Staff ..... 39
- Meeting Dates 2017 ..... 41



Our **Logo** represents the 'agora':

*'A meeting place for discussion with no competing sides, just like the Greek theatre form.*

*The shape is open-ended signifying that anyone can join the discussion and that the group has no finite size'.*

# About CIC

The Construction Industry Council (CIC) was established on 2 November 1988 as a company limited by guarantee. CIC Company number is 02388396 and its registered office is at 26 Store Street, London WC1C 7BT.

CIC occupies a key role within the UK construction industry providing a single voice for professionals in all sectors of the built environment through its collective membership of 500,000 individual professionals and more than 25,000 firms of construction consultants.

CIC exists solely to provide cohesion amongst the professional organisations that plan, design, construct, manage and maintain the built environment. We are not a trade association and we do not represent individual companies; we are an umbrella body that brings together around 50 professional ('not-for-profit') organisations in the built environment.

Most of our work is focused on liaison with government and other national authorities. CIC represent professional interests in the Construction Leadership Council and the Strategic Forum for Construction. These bodies bring the industry together with government and its clients. We have regular ongoing dialogue and meetings with Ministers and officials in many government departments.

Information dissemination is a key function for CIC and we alert members to issues, particularly in relation to government activity, through email newsletters, briefings and personal contact. Many members publish this information to their own membership, either electronically or via their own newsletter/journals.

The breadth and depth of its membership means that CIC is the only single body able to speak with authority for the professional services and consultants on the diverse issues connected with the built environment without being constrained by the self-interest of any particular sector of the industry.

CIC co-owns the Construction Umbrella Bodies (Holdings) Ltd, alongside the Construction Products Association, which owns the successful Considerate Constructors Scheme, and it also owns a subsidiary company, CICAIR Ltd, which manages the Approved Inspector Register.

## CIC'S Vision

"To be recognised and respected by government and across the UK construction industry as an effective thought leader, representing the UK built environment professions together"

## CIC'S Mission

"To improve the UK construction industry by collectively representing and supporting the built environment professions"

CIC works with its members and others to facilitate the creation and maintenance of a sustainable built environment that serves the needs of society.

## Strategic Priorities

The Council agreed three Strategic Priorities, which will be of equal importance, for the period 2016-2020, as follows - the CIC:

1. Provides thought leadership relevant to the construction industry and the wider built environment
2. Champions and collectively represents UK built-environment professions
3. Promotes collaboration and knowledge sharing amongst its members

Unless otherwise determined by Council, all activities of CIC will be required to support one (or more) of these strategic priorities.

## Membership

There are three categories of membership:

### **CIC MEMBERS:**

UK based Professional Institutions, Business or Standards Setting Associations or Built Environment Professional Services Organisations, whose primary purpose is engaged with the planning, procuring, designing, constructing, training, developing, researching, regulating, maintaining or managing the built environment.

### **CIC ASSOCIATES:**

UK based non-commercial organisations involved in the planning, procuring, designing, constructing, training, developing, researching, regulating, maintaining or managing the built environment.

### **CIC HONORARY AFFILIATES:**

For individuals and organisations that CIC wishes to recognise, by invitation only, there is no membership subscription and it does not confer any membership rights.

## Membership Principles:

All new CIC Members, Associates and Honorary Affiliates are to be approved by the CIC Council, based on recommendations from the CIC Board and compliance with the relevant agreed membership criteria.

The Council may choose to delegate the approval of Associates and Honorary Affiliates to the Statutory Board.

Only CIC Members are part of the governance and policy setting of the CIC, with subscriptions and Council voting rights scaled to the size of organisation, in recognition of the number of professionals represented by different scales of CIC Member organisations.

All existing Full, Associate and Affiliate CIC members will be able to continue their membership in the appropriate membership class.

## Membership Subscriptions

Subscriptions as agreed from year-to-year by Council, must be paid by CIC Members and CIC Associates.

CIC Members are scaled (Tiers A+B+C) to match the different scales of organisations. The level of subscription will be based on the organisation's overall turn-over. Membership subscriptions rates for 2017 are:

Tier A:	large organisations	£50,000
Tier B1:		£22,000
Tier B2:	medium organisations	£15,000
Tier B3:		£ 8,000
Tier C:	small organisations	£ 3,500

CIC Associates are scaled (Tiers D+E+F) to match the different scales of organisations. The level of subscription will be based on the organisation's overall turn-over. Membership subscriptions rates for 2017 are:

Tier D:	£2,500
Tier E:	£1,500
Tier F:	£600

In addition to the subscriptions, members will be invited to contribute funding to projects both generically and in response to future demand.

## CIC Statutory Board & Appointments

### THE STATUTORY BOARD

The Council has delegated authority to a separate group to act as a Board of Directors for the purposes of the Companies Act. The Statutory Board comprises up to 12 directors, consisting of:

- CHAIRMAN elected by Council for 2 years plus 1 year preceding and following as deputy Chair (= 4 years in total)
- DEPUTY CHAIRMAN elected by Council as part of 4 year system, including 2 middle years as Chair (= 4 years in total)
- CHIEF EXECUTIVE ex-officio – appointed by the Council
- HONORARY TREASURER elected by the Council (maximum term = 5 years) or Executive Finance Director (ex-officio appointed by the CEO/Board)
- CHAIR OF SUBSIDIARY STATUTORY COMPANY CICAIR LTD elected by CIC Council for 4 years

- 3 DIRECTORS candidates for each of the 3 seat nominated from each Tier of CIC membership (Tiers A+B+C), for election by Council – elected for 2 to 3 years, but renewable
- Up to 4 SPECIALIST DIRECTORS selected by the Board for their relevant skills, experience, diversity balance, elected or co-opted for 2 years

Timing of elections and appointments to be staggered to achieve a continuity of experience.

### **THE CHAIRMAN**

The Council shall have power to appoint and remove such person (whether or not a representative to the Council) as it shall think fit to be a Chairman. In any case on appointment the Chairman shall cease to be a representative. The Chairman will be appointed for a period of two years commencing from the conclusion of the next meeting of Council [usually June] held following the Annual General Meeting and may not be re-elected on expiry of that period. The Chairman shall normally be appointed in every even year (2014, 2016 etc). On the cessation of office as Chairman, unless otherwise determined by Council, the Immediate Past Chairman shall remain a member of Council, and of The Statutory Board, for one further year. The Chairman may not be a serving President, Chairman or Chief Executive Officer of a member body.

The functions of the Chairman are to:

- Chair AGM (1), Members' Conference (1); and Council Meetings (3)
- Chair the Statutory Board (8)
- Chair CEO Remuneration Committee (1)
- Seat on Strategic Forum for Construction (4)
- Guest at various industry events and dinners
- Meeting with member Presidents, industry bodies and Government Ministers and personnel.
- Other functions as agreed by the Chairman and Board.

### **CHAIRMAN-ELECT**

The Council shall have power to appoint and remove such person (whether or not a representative to the Council) as it shall think fit to be Chairman-Elect. In any case on appointment the Chairman-Elect shall cease to be a representative. The Chairman-Elect will be appointed for a period of one year commencing from the conclusion of the next meeting of Council held following the Annual General Meeting and, unless otherwise determined by Council, shall take office as Chairman at the end of this year as Chairman-Elect. The Chairman-Elect shall normally be appointed in odd years (2015, 2017 etc).

### **DEPUTY CHAIRMAN**

The Immediate Past Chairman (for one year immediately following office as Chairman) and Chairman-Elect will hold the title, and be known as, Deputy Chairman during alternate years.

### **COMPANY SECRETARY (CHIEF EXECUTIVE)**

The Secretary to the Construction Industry Council will be its Principal Executive Officer. He will act as Clerk to the Council and head a permanent staff which he will be responsible for establishing.

Within policies agreed by Council, he will seek to ensure that the CIC fulfils its objects in accordance with its Memorandum of Association.

The Secretary shall be appointed by the Council for such term, at such remuneration and upon such conditions as they may think fit; and any Secretary so appointed may be removed by them.

Key responsibilities:

- Ensuring CIC complies with all relevant laws and regulations and operates to a high ethical standard;
- Ensuring the Statutory Board comply with legislative requirements and apply good governance practice including meeting Companies Act requirements.
- In consultation with the Chairman and Directors, preparing agendas and minutes for Board meetings;
- Responsible for the development and continuous good practice of the welfare of CIC and its members and staff.
- Responsibility for the administration of the Board.
- Acting as a Director of CIC and its subsidiary companies.

### **HONORARY TREASURER**

The Council shall also elect an Honorary Treasurer whom shall hold office until the conclusion of the next meeting of the Council held following the Annual General Meeting. An Honorary Treasurer may not serve for longer than five consecutive years. The Honorary Treasurer may not be the current President/Chairman or Chief Executive Officer of a member body.

### **THREE DIRECTORS**

The three persons elected to sit on the Board will be the person nominated by a Tier A member, receiving the most number of votes; the person nominated by a Tier B member, receiving the most number of votes; and the person nominated by a Tier C member, receiving the most number of votes.

If there is no person nominated by one or more Tiers of membership, then the person receiving the next highest number of votes once the people elected in accordance with the paragraph above have been removed will be deemed elected to the Board irrespective of the Tier of member submitting their nomination.

To allow for continuity on the Board, the person receiving the highest number of votes (irrespective of tier) will serve for four years (until 2020); the person receiving the second highest number of votes (irrespective of tier) will serve for three years (until 2019); and the person receiving the third highest number of votes (irrespective of tier) will serve for two years (until 2018).

Any directors nominated by the membership are eligible to stand for a second term only, but must be subject to a re-election process by Council. These elections will normally take place at the summer meeting of Council, immediately following the AGM.

### **THE ROLE OF THE STATUTORY BOARD**

The Statutory Board manages the operation of CIC on behalf of the Council. It meets up to eight times per year and provides a four-monthly report on its activities and decisions to each Council meeting.

The day to day running of the Construction Industry Council will be vested by the Board. No business shall be transacted at any meeting of the Board unless a quorum is present. A quorum of the Board will be one third of those members eligible to attend.

The dates of meetings and agendas will be agreed by the Chairman and Chief Executive Officer. The responsibility for the programming and administration of meetings rests with the Company Secretary.

**TERMS OF REFERENCE OF THE STATUTORY BOARD**

- To be responsible, through the Secretary of CIC and his staff, for the day to day management of the Council including matters of finance, staffing and property;
- to be responsible for producing budgets and monitoring expenditure against them;
- to be responsible for all membership matters including the recommending of the admission of new members to the Construction Industry Council;
- to be responsible for implementing and developing policy within the general strategies and guidelines laid down by Council from time to time;
- to make recommendations to Council upon major policy/strategy changes, including those proposed by other committees, persons or bodies; and
- to agree the appointment of task groups, communities of knowledge or any other operational group or panel and to report annually to the AGM regarding all such groups in existence.

**CIC Council Member Representation & Voting**

The CIC Council remains the governing body of CIC. It will meet at least three times per year with an additional AGM and members’ conference.

Each CIC Member is to have a number of voting representatives at the CIC Council related to their scale and the number of professionals that they represent:

- 3 voting representatives from each of the Tier A Member organisations
- 2 voting representatives from each of the Tier B Member organisations
- 1 voting representative from each of the Tier C Member organisations

The current CIC membership would therefore produce a CIC Council of:

Chairman	x 1 = 1
4 Tier A	x 3 = 12
9 Tier B	x 2 = 18
18 Tier C	x 1 = 18
Total =	49 voting representatives

In addition, each CIC Member and Associate member will have 1 non-voting observer representative who can attend and participate in CIC Council meetings and AGMs.



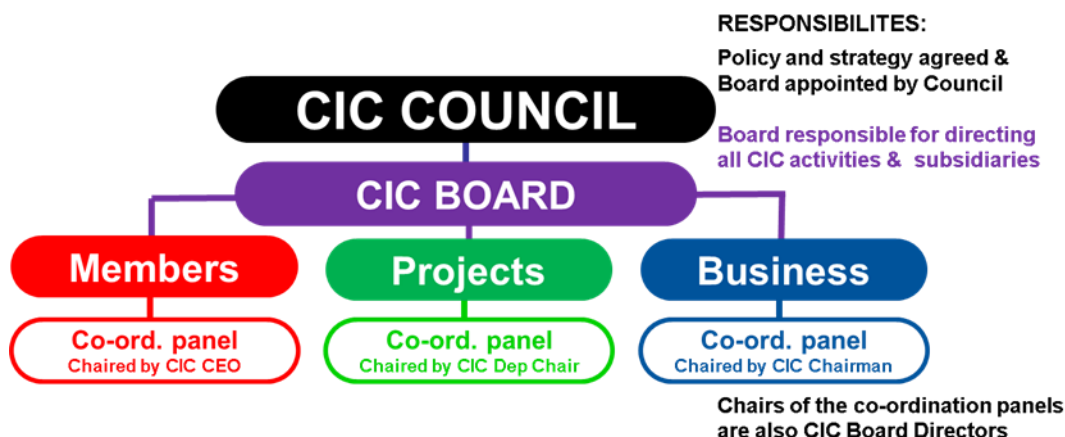
Honorary Affiliate are welcome to attend the CIC Council as observers but have no voting rights.

Each Member Organisation will nominate their voting representative/s to the CIC Council meeting annually.

**The Council is only required to meet once annually but normally meets three times in each year (March, June and October).** Council meetings are hosted amongst our Members (according to availability and venue capacity).

## CIC BUSINESS MODEL & ACTIVITIES

The CIC organisation and business model is to be based around 3 key areas of activity, with income and expenditure streams to generate project funding and reserves. These 3 areas will focus on Members, Projects and Business Services, as illustrated by this diagram:



These 3 key activities have separate and different income and expenditure streams as illustrated in the following diagram:

**PROPOSAL 5a: CIC Council agrees that the CIC business model is organised around the following 3 key activities with income and expenditure streams to generate project funding and reserves:**



The existing activities, Board/Council reporting and management accounting of the CIC is to be organised within the 3 new activity areas:

### **MEMBERSHIP SERVICES**

The Membership Services is to be funded by membership subscriptions – to include Representation/lobbying; Thought Leadership; Specialist Groups and Panels; Nations' and Regions' activity; events and information guides.

The Chief Executive Officer – or his/her nominee – of each CIC Member will be a member of the Membership Panel.

The three statutory board directors nominated by the CIC members will be ex-officio members of the Membership Panel, meaning that there will be effectively four representatives of each tier of members on the Membership Panel.

Committees of member representatives (eg Diversity, Health and Safety, Green Construction, Public Affairs) will report to the Membership Panel.

### **CIC PROJECTS**

CIC Projects will be funded by grants and contributions [example BEPE Project] - developing key issues related to thought leadership, developing knowledge, developing skills, attracting diverse talent, sustainability.

CIC Projects will be overlooked by the new Projects Panel which will be chaired by the CIC Deputy Chairman. The initial members of the Project Panel will be the Chairman and Chief Executive; the Champions, Executive Lead and the substantive funding body for each extant project approved by the Statutory Board.

Existing Project Boards and Steering Groups (eg BEPE, BIM) will report to the Project Panel and through the Project Panel to the Statutory Board.

### **CIC BUSINESS**

CIC Business is to be funded by sustainable income from sales/fee – to include relevant income generating activities such as accreditation services, CICAIR Ltd, DQI etc, CIC publications and contracts plus other sustainable income generating activities approved by Council.

CIC Business will be overlooked by the new Business Panel which will be chaired by the CIC Chairman. The initial members of the Business Panel will be the Deputy Chairman and Chief Executive; the Chairman and Executive Lead for each extant subsidiary company or discrete business activity, approved by the Statutory Board, will sit on the Business Panel.

Existing Subsidiary Companies and management groups (eg CICAIR, DQI) will report to the Business Panel and through the Business Panel to the Statutory Board.

## **Champions & Panels**

The Panels and groups will continue to meet until the AGM in 2017 unless otherwise determined by Council. Their line of responsibility will be determined in accordance to whether the group is responsible for delivering a membership service, project or a business activity and therefore to which co-ordinating panel the group is responsible. In some cases it may be that the champion and/or panel is responsible to more than one co-ordinating panel for different activities.

## **Rules & Bylaws 2016/17**

The Rules & Bylaws 2016/17, as approved by the AGM in May 2016, will be updated to incorporate the changes approved by the Council.

## **Articles of Association**

Once new Rules & Bylaws have been agreed by Council, it will be necessary to see what changes might be required to the Council's Articles of Association. This will require some legal advice.

The intention will be to present revised Articles of Association to the Board and the Council, early in 2017.

The CIC is now equipped to meet the near future with a focused and clear Vision, Mission and strategic priorities, with an updated identity to match.

# CIC Members

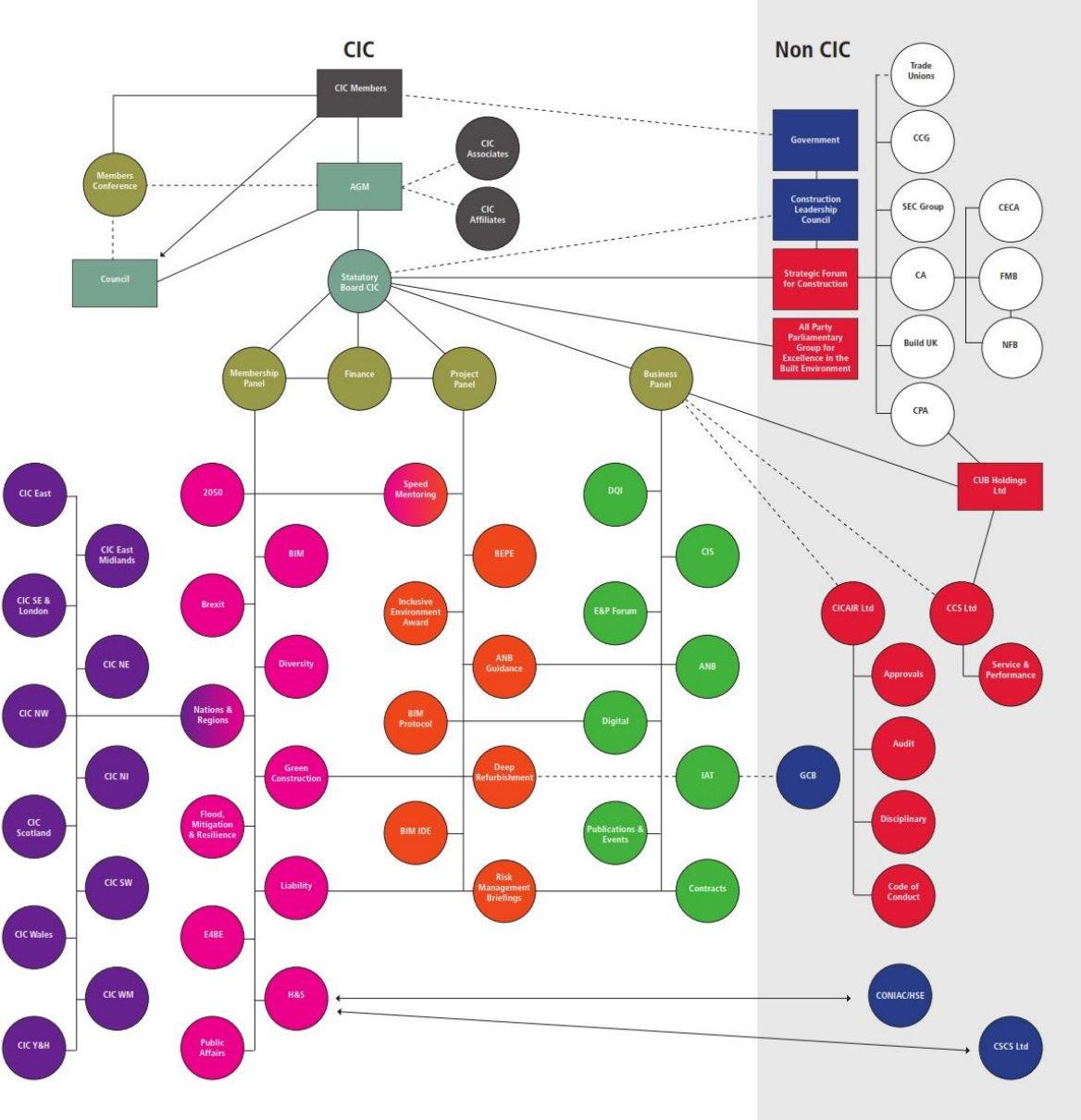
## Members

ACA	Association of Consultant Architects
ACAI	Association of Consultant Approved Inspectors
ACE	Association for Consultancy and Engineering
APM	Association for Project Management
APS	Association for Project Safety
BIID	British Institute of Interior Design
BIFM	British Institute of Facilities Management
BRE	Building Research Establishment
BSRIA	Building Services Research and Information Association
CABE	Chartered Association of Building Engineers
CIAT	Chartered Institute of Architectural Technologists
CIBSE	Chartered Institution of Building Services Engineers
CICES	Chartered Institution of Civil Engineering Surveyors
CIH	Chartered Institute of Housing
CIHT	Chartered Institution of Highways & Transportation
CIOB	Chartered Institute of Building
CIPHE	Chartered Institute of Plumbing and Heating Engineering
CIRIA	Construction Industry Research and Information Association
GF	Ground Forum
ICE	Institution of Civil Engineers
ICWCI	Institute of Clerks of Works and Construction Inspectorate
IET-BES	Institution of Engineering and Technology - Built Environment Sector
IIRSM	International Institute of Risk & Safety Management
ISSE	Institute of Specialist Surveyors and Engineers
IStructE	Institution of Structural Engineers
LABC	Local Authority Building Control
LI	Landscape Institute
NHBC	National House-Building Council
RIBA	Royal Institute of British Architects
RICS	Royal Institution of Chartered Surveyors
RTPI	Royal Town Planning Institute

## Associate Members

ADJ SOC	Adjudication Society
BACH	British Association of Construction Heads
BBA	British Board of Agreement
BSI	British Standards Institute
CCS	Considerate Constructor Scheme
CIMCIG	Chartered Institute of Marketing (Construction Industry Group)
CIPR	Chartered Institute of Public Relations
HEA	The Higher Education Academy
KCL	King's College London Centre of Construction Law and Dispute Resolution
LCI-UK	Lean Construction Institute
SCL	Society of Construction Law
UCEM	University College of Estate Management

# CIC Organisational Chart



# CIC Committees

CIC has various committees and panels run by Champions, who report to the Membership Panel.

Our committees create policy, debate, investigate, promote and report on a range of industry initiatives and issues which are designed to educate, assist and enhance the work experience for employees, employers and professionals in the sector.

Full Members are welcome to nominate a representative to join any of the following panels.

- 2050 Group
- BIM Forum
- Diversity Panel
- Education for the Built Environment Group (E4BE)
- Flood Mitigation & Resilience Group
- Finance Committee
- Green Construction Panel
- Health & Safety Committee
- Liability Panel
- Public Affairs Panel
- Nations & Regions

## 2050 Group (Chair: Louise Clarke)

The CIC 2050 Group comprises young dynamic industry professionals who represent a wide range of disciplines across the built environment. The Group's vision is to provide a collaborative forum and platform for members of all construction disciplines and professional bodies to develop ideas, share knowledge and promote advancement of sustainable industry initiatives with a view to achieving a carbon neutral construction industry by the year 2050.

Key Objectives:

- Maintain representation within the Group of all key professional disciplines.
- Bridge the divide between the current generation of industry leaders and the future generation of industry professionals.
- Provide clear representation and speak with an integrated voice for future generations.
- Be an active forum that offers unique perspectives and thought leadership to promote more sustainable strategies and practices within the industry.
- Demonstrate the changing image of construction, including diversity, equality and an attractive career for future professionals.
- Share knowledge, promote sustainability initiatives and disseminate information to help positively shape the future of the industry.
- Contribute to the current and future industry strategies and assist in their delivery; for instance, Construction 2025 via the Construction Leadership Council.

## Building Information Modelling (BIM) FORUM (Chair: Dale Sinclair)

CIC established the Building Information Modelling (BIM) Forum to take forward the BIM strategy paper published by the Department of Business Innovation and Skills in June 2011.

The objectives of the Government Construction Strategy are to reduce the whole life cost of buildings and infrastructure by 20% and to achieve the government's targeted reductions in carbon dioxide emissions.

In order to achieve their objectives, all government departments need to enhance the briefing process, facilitate consistent decision-making using consistent information at key project stages and to measure the performance of the construction over its lifetime.

The government construction requirement is for all government departments to obtain similar relevant information at defined work stages in order to inform decision-making on procurement of all projects over an agreed threshold monetary value.

The Cabinet Office BIM Steering Group requested the engagement of the CIC BIM Forum to understand the information requirements of the government departments.

The CIC BIM Forum contributed to the definition of the information required during both capital and operational expenditure and to ensure that broad indicators of design, construction and operational quality are embodied in the "data drops".

Since this phase of the work has now been completed, the BIM Forum will now meet to discuss legacy of BIM.

## Diversity Panel (Chair: Andy Ford)

The Diversity Panel's vision is to provide a collaborative forum and platform for members of all construction disciplines and professional bodies to identify and promote diversity policy and activities in the construction industry.

The Diversity Panel will innovate and lead to bring about cultural change in our industry.

### Goals:

- Prepare a strategy to influence and engage with industry leaders to bring about a cultural change in attitudes to diversity, fairness and respect within our workplace(s)
- Develop a media plan to showcase positive images of construction as a means of attracting a diverse workforce to improve our image and fix our reputation
- Define what diversity means in practice and develop a model/guide with training programme for the workforce
- Attract and retain young people as the future leaders of our industry
- Open up career paths and provide ladders of opportunity

### Objectives:

- Identify key industry role models and obtain media coverage
- Become the 'go to' organisation on diversity best practice, knowledge, research within construction built environment.
- Map diversity initiatives and champion these through our membership
- We will identify from our panellist champions for each stream of diversity

- Achieve government funding to deliver the CLC action A2
- Signpost to careers resource packages for teachers, advisers (CBE media promotion)
- Organise a 'Diversity means business event
- Complete the Data Gathering Project

## Education for the Built Environment Group (E4BE) (Chair: Professor Barry Clarke)

The vision is a strategic approach to working in partnership with higher education (i.e. provision at level 4 and above) whether by Higher Education Institutions, Further Education Colleges providing higher education or, where relevant, private providers), focusing on the mutually beneficial needs of the Construction and Built Environment (C&BE) professional community and Higher Education providers in relation to recruitment, education needs and education delivery. This would be intended to help shape capability and build capacity in the sector.

The Aims of the Group are to enable professional institutions to:

- Extend their engagement with higher education in collaboration with other stakeholders so that value is added to what higher education offers to industry.
- Monitor and address the higher education landscape in relation to changing policy.
- Represent the voice of the C&BE professional in responses to government consultations and influencing Government on matters relating to higher education policy.
- Monitor changes in industry which could impact on C&BE programmes – including cross-disciplinary issues and common themes.
- Review the role of accreditation for higher education programmes, both by professional bodies and at a sector-wide level.

## Flood Mitigation & Resilience Group (Chair: Sue Illman)

This group was formed in 2015, to consider how to promote further awareness of the APPGEBE Commission Living With Water Report.

## Finance Committee (Chair: Jo Watkins)

A Finance Committee will advise the Honorary Treasurer and Chief Executive on all issues of CIC financial policy by reference to the CIC Corporate Plan and resources available from member associations and institutions and in particular to propose:

- (i) the basis of membership fee
- (ii) the annual accounts

Terms of Reference for the Finance Committee

- to propose budgets for approval;
- to monitor income and expenditure against approved budgets; and
- to offer a strategic view on the new sources of income and related resource, and on constraints which could arise now or in the future.

Membership of the Finance Committee will be agreed by the Board and will include at least five representatives of Full Members.

## **Green Construction Panel (Chair: George Adams)**

This group was formed in 2014. The terms of reference of the Green Construction Panel include:

- Advise the Membership Panel and Board, on issues relating to sustainability, carbon reduction and all other green construction issues
- Link and co-ordinate the green construction activities of CIC members and other associated bodies of the construction industry, and in particular, act as an interface with the Green Construction Board
- Identify and promote green construction policy and activities in the construction industry, to benefit society. Encourage new thinking, inter group relationships, provide support to new initiatives that move towards sustainable built environment
- Improve knowledge of built environment sustainability and communication
- Develop core themes for CIC
- Provide alternative thinking
- Provide industry presentations on sustainability or energy efficiency in social media
- Promote CIC in publications, industry presentations and press articles
- Promote energy conservation

The essence of the CIC Green Construction Panel is the encouragement of the need to develop a sustainable society through energy and water, natural resource conservation addressing the urgent need to learn how to improve our existing urban environments.

## **Health & Safety Committee (Chair: Peter Caplehorn)**

The CIC Health and Safety Committee provides a forum for health and safety representatives who are CIC members to meet, shape policy, discuss initiatives and develop responses on behalf of CIC.

Key Objectives:

- To promote the consideration of health and safety in every sector of the built environment at all stages of projects: planning, design, construction, management, maintenance and demolition.
- To identify and publicise examples of good practice.
- To link and co-ordinate the activities of CIC members in relation to health and safety.
- To represent CIC and its membership to key agencies such as the Health & Safety Executive, CONIAC and CSCS.
- To promote health and safety risk management in all disciplines of education within the built environment.
- To hold under review legislative developments in the UK and in Europe.

## **Liability Panel (Chair: Sarah Lupton)**

CIC's work in the area of contracts, insurance and legal liability issues is undertaken by the Liability Panel, one of CIC's longest running committees. The panel has some 40 members consisting of representatives from CIC's membership, the legal professions and specialist insurers. Members of the main Liability Panel meet five times a year and in addition to the main committee, there are also smaller sub-groups which are set up to enable the Liability

Panel to provide a rapid response to a fast moving area. Currently there is a Liability Panel BIM Sub-group in operation.

Key Objectives:

- Consider liability, legal and insurance issues that affect CIC's members.
- Keep CIC's members informed about such issues and publish guidance.
- Draft and publish standard form contract documentation for consultants.
- Campaign for changes in proposed or existing law.
- Work with other construction industry bodies to achieve these ends.

## **Public Affairs Panel (Chair: Rt. Hon. Nick Raynsford)**

The purpose of the CIC Public Affairs Panel is to articulate, co-ordinate and promote the joint views of the construction professions and allied bodies in respect to a wide range of issues which affect the built environment. The main function of the Panel is to act as a two way channel by informing members of major developments in economic and policy matters and by providing a forum for responses to Government consultations.

Key Objectives:

- To raise and maintain CIC's profile to ensure that it is seen as an authority on issues in relation to the built environment.
- To assist in the preparation of policy papers and consultation responses.
- To co-ordinate members' public affairs activities where possible and appropriate.
- To assist in handling the media.

## **Nations & Regions (Chair: John Nielsen)**

CIC has developed a regional network throughout the nine English regions, Wales, Scotland and Northern Ireland through its Regional Committees.

The aim of the Nations and Regions is to provide a single voice for the industry in discussions with local members and interested parties to establish a network of organisations that consider issues relevant to the region and to promote public awareness of the construction industry.

At local level the CIC Regional Committees provide an influential, collective voice for the Built Environment and creates a valuable platform for member organisations to share their current themes and priorities and facilitates the opportunity for joint initiatives.

Committees are currently active in some English regions, Wales and Northern Ireland and Nations and Regions chairs meet quarterly with CIC to discuss the activities within the region and any current issues they feel need addressing at a national level.

CIC does not wish to duplicate existing activity in the regions, and so where possible, is working with existing pan-industry organisations to produce a cohesive voice.

# External Representation

## Strategic Forum for Construction [SFfC]

Since 1994, CIC has represented the professional bodies on the lead body for the construction industry.

Until 2000, this was the Construction Industry Board (CIB), formed in response to a recommendation from the “Latham” Review. In 2001, following a submission from the CIC, the Government approved the formation of the Strategic Forum for Construction [SFfC] initially under the chairmanship of Peter Rogers and then the Rt Hon Nick Raynsford MP (following on from his Chairmanship of the CIC). Since 2008, the Chair has rotated amongst the member groups.

The Forum comprises five “Colleges”, as follows:

- CLIENTS, represented by the Construction Clients Group
- CONTRACTORS, jointly represented by Build UK and the Construction Alliance
- MANUFACTURERS, represented by the Construction Products Association
- PROFESSIONS, represented by CIC
- SUPPLY CHAIN, represented by Build UK and the Specialist Engineering Contractors Group

At the last count, these organisations collectively represented over 250 professional bodies and trade associations.

Until 2010, there was a sixth college representing the Trade Unions but this is currently inactive.

Full Meetings of the Strategic Forum take place four times per year, or as necessary, and – since 2013 – each College takes its turn in hosting and chairing meetings. In practice, CIC generally hosts the Forum for one quarter in each year [for long periods in the past, CIC has provided the Secretariat for the Strategic Forum].

CIC has four seats on the Strategic Forum and these are taken ex-officio by the Chairman, Chief Executive, Deputy Chairman and by Simon Rawlinson, who is the link between the Forum and the Construction Leadership Council.

The day-to-day business of the Strategic Forum is managed by an Executive Group of one representative per “College” on which CIC is represented by the Chief Executive.

The Strategic Forum is recognised by the Department of Business, Energy and Industrial Strategy (BEIS), the Cabinet Office and many other government departments as the main representative vehicle for the construction industry and, in this capacity, it is the only organisation to have representation on the Construction Leadership Council. Currently, the SFfC representative on the CLC is Simon Rawlinson of CIC.

There is an annual fee for membership of the Strategic Forum, paid by CIC on behalf of its members, which is currently £2,000.

## **Construction Leadership Council [CLC]**

The Construction Leadership Council was originally formed by the Coalition Government to develop and implement the Industrial Strategy. The CIC was directly represented on the CLC through its Chairman. The work of the CLC was managed by a Delivery Group on which the CIC Chief Executive sat.

The CIC also employed the Chief Construction Adviser who was then seconded to BIS and the Cabinet Office. The CCA was the principal officer of the CLC.

Following the 2015 General Election, the CLC was reconstituted and the role of the CCA was abolished with effect from 1<sup>st</sup> December 2015. The Delivery Group was abolished and Andrew Wolstenholme replaced Sir David Higgins as the industry co-chair of the CLC (alongside the Minister with responsibility for construction) and the membership was reduced. The only representative organisation to nominate a representative to the reconstituted CLC was the Strategic Forum and Simon Rawlinson of CIC was appointed.

The CLC has a number of work streams, including Skills, Business Models and Procurement, Innovation and Green Construction. CIC is represented on a number of these work streams.

## **Green Construction Board [GCB]**

The Green Construction Board is a joint industry/government body set up in response to the Innovation and Growth review established by Lord Mandelson on 2009. It has survived two changes of government since that time.

For a number of years, CIC administered the budget for the GCB under an Industrial Development Grant, which financed a number of low carbon initiatives (including the Low Carbon Route Map). This funding was exhausted in 2014/15.

The Chair of the CIC Green Construction Panel, currently George Adams (former President of CIBSE) represents CIC on the GCB.

## **All-Party Parliamentary Group for Excellence in the Built Environment [APPGEBE]**

This group was formed following the 2010 General Election and CIC has provided the Secretariat from its inception. This appointment was confirmed following the 2015 General Election when the group was re-registered.

The Group is chaired by Oliver Colville MP and its vice-chairmen are The Earl of Lytton, Helen Hayes MP, Cheryl Murray MP and the Rt Hon Maria Miller MP. The group has in excess of 25 members from both Houses of Parliament.

The Group currently functions mainly through an annual Commission of Inquiry, which is run very much on similar lines to a Select Committee, apart from the fact that the Commission is balanced between parliamentary members and industry experts. The latter are recommended by the CIC, which provides the authorship for the report and the Secretariat for the Inquiry.

The APPG for the Excellence in the Built Environment seeks to work closely with other All-Party groups representing particular sectors of the built environment, such as architecture and planning, climate change, infrastructure, building, highway maintenance and gas safety. It is committed to investigate all current issues relating to the built environment and to engage parliamentarians and other serious commentators in looking at those major strategic issues affecting the built environment, which impact upon the lives of every constituent.

Since its first meeting in October 2010, the group has covered the following topics:

- Building Excellent Schools (*October 2010*)
- Building an Excellent Olympic Games (*December 2010*)
- Excellence in Construction Procurement (*February 2011*)
- Low Carbon Construction (*March 2011*)
- Localism and Regeneration (*July 2011*)
- Inquiry into achieving best value in the procurement of construction work - A Better Deal for Public Building (*published report in September 2012*)
- Inquiry into Sustainable Construction and the Green Deal - Re-Energising the Green Agenda (*published report in October 2013*)
- Inquiry Into Flood Resilience Of The Future – Living with Water (*published report in March 2015*)
- Inquiry into Quality of New Build Housing in England and Wales (*published in May 2016*)
- Inquiry into the impact of BREXIT on skills needs in the built environment and the construction industry.

The Group carries out other activities and functions from time-to-time during the year.

## **Construction Industry Advisory Committee, Health & Safety Executive [CONIAC]**

Since 1994, CIC has represented the professional bodies on this statutory committee. Appointments are made by the Secretary of State on the recommendation of CIC and the CIC representatives report to the CIC Health & Safety Committee. The current CIC representatives are the Chair of the CIC H&S Committee, Peter Caplehorn, and Tony Putnam.

## **BIM Task Force**

CIC has administered the funding for the BIM Task Force activity in pursuit of the mandate for government projects to apply BIM L2 by April 2016, since 2012. CIC appointed Mark Bew to chair the task force overseeing this project. The funding ended on 31 March 2016 but there was an extended run-on period to complete activities by 30 September 2016.

## **Built Environment Professional Education [BEPE]**

The Built Environment Professional Education Project (BEPE), a five year Paralympic Legacy project that began in October 2013 as a joint Government / Greater London Authority project, has been transferred to the Construction Industry Council (CIC) to help the transition to an industry owned and led project.

### **Project Vision**

Every newly qualified built environment professional will have the knowledge, skills and attitude to deliver accessible and inclusive buildings, places and spaces.

This will be achieved by embedding inclusive design as a core part of the required curriculum in the education of built environment professionals with student assessments and Assessments of Professional Competence that reflect this.

### **Role of BEPE Project Board**

The Board will be a forum to drive forward the project by sharing and facilitating ideas across the professions and the education sector. The Board will review the vision and monitor progress but its aim is to be a forum for innovative ideas and creative approaches to effect the change needed.

## **Construction Skills Certification Scheme [CSCS]**

CIC is not an owner of the CSCS but the Council represents professional bodies on the board of the CSCS, through the appointment of a representative, currently David Watson, who reports back as necessary to the Health & Safety Committee and the Executive Board.

## **Inclusive Environments Round Table**

The Inclusive Environments Round Table meetings occur twice yearly and are co-chaired by Ministers from DWP and DCLG. The CIC is represented on this group by the Chairman and Chief Executive.

## **Government Construction and Infrastructure Stakeholder Group**

CIC represents the professional bodies on this Cabinet Office Committee. Professor Tim Broyd recently replaced Rob Manning as the CIC representative

## **UKAS Policy Advisory Forum**

CIC has two seats on the Forum, representing the professional bodies. CIC is currently represented by Hywel Davies (CIBSE) and Paul Overall (LABC).

## **Offsite Housing Review**

In 2013, CIC was commissioned jointly by DCLG and BIS to carry out a major review of the Offsite Housing Sector and identify how this sector might be used to enhance the quality and quantity of new housing delivery. CIC appointed Professor John Miles and Professor Nick Whitehouse to carry out the review.

## Constructing a Better Future

These recommendations on achieving quality and best value in the built environment formed the CIC manifesto to all political parties and prospective Members of Parliament prior to the 2015 General Election. Previous manifestos had been prepared for the 1997, 2005 and 2010 General Elections.

## PROJECTS

### **CIC/Project/1601**

### **BIM Industrial Development Grant**

Status: Approved by Executive Board and commenced  
Agent: BIM Task Force chaired by Mark Bew MBE  
Overseen by: CIC Board  
Champion: Chief Executive  
Executive Lead: Graham Watts  
Budget: £1,161,000.00  
Funding Source: BIS Industrial Development Grant/ approved  
Outcome: Embedding L2 BIM  
Target Date: 31 August 2016

### **CIC/Project/1602**

### **Publication of revised CIC BIM Protocol**

Status: Approved by Executive Board and commenced  
Agent: Beale & Co [Andrew Croft]  
Overseen by: CIC Digital Board  
Champion: Dale Sinclair  
Executive Lead: Graham Watts/Eve Farraud  
Budget: up to £15,000 [proposed increase to £22,500]  
Funding Source: BIM Industrial Development Grant/ approved  
Outcome: Publication of CIC BIM Protocol v2  
Target Date: November 2016 [proposed move to March 2017]

### **CIC/Project/1603**

### **Built Environment Professional Education**

Status: Approved by Executive Board and commenced  
Agent: Julie Fleck OBE  
Overseen by: BEPE Board  
Champion: Paul Morrell OBE/ Tony Burton  
Executive Lead: Graham Watts/Eve Farraud  
Budget: £50,000  
Funding Source: DWP/ approved  
Outcome: Various according to Business Plan  
Target Date: 31 March 2017

### **CIC/Project/1604**

### **CIC Inclusive Environments Award**

Status: Approved by Executive Board and commenced  
Agent: None  
Overseen by: Panel of Judges  
Champion: Tony Burton/John Nolan  
Executive Lead: Graham Watts/Liz Drummond  
Budget: £3,000

Funding Source: Sponsorship from Skanska  
Outcome: Award presented at Construction Industry Summit  
Target Date: 21 September 2016

**CIC/Project/1605** regarding BREXIT has now been transferred to Membership Services since it is funded from the membership subscriptions.

**CIC/Project/1606**

**Amending suite of CIC Collateral warranties**

Status: Approved by Executive Board and commenced  
Agent: Beale & Co  
Overseen by: Liability Panel  
Champion: Sarah Lupton/Sarah Blair  
Executive Lead: Graham Watts  
Budget: £3,500  
Funding Source: CIC  
Outcome: Publication of new documents  
Target Date: November 2016

**CIC/Project/1607**

**Updating User Guide to Adjudication**

Status: For Approval  
Agent: None  
Overseen by: Adjudicator Nominating Board  
Champion: Niall Lawless  
Executive Lead: Graham Watts/Chi Wong  
Budget: £2,000  
Funding Source: CIC members contributing £200 each – achieved  
Outcome: Publication of new guide  
Target Date: November 2016

# Business Based Activities

CIC offers a broad spectrum of **professional services** which includes:

## Adjudication

Adjudication is a process designed to help resolve disputes cheaply and efficiently. Section 108 of the Construction Act (or the Housing Grants, Construction and Regeneration Act 1996 in full), provides parties to a contract with a right to a legal statutory right to resolution by adjudication. If the contract does not contain an adjudication procedure then the parties may apply to CIC to nominate an adjudicator from the CIC Register of Adjudicators.

CIC is also a leading Adjudicator Nominating Body (ANB) accepting applications from adjudicators who are registered with CI Arb, CIOB, ICE, RIBA, RICS and TeSCA.

Contact: Scott McLew ([smclew@cic.org.uk](mailto:smclew@cic.org.uk))

## Approved Inspectors

As the body designated by the Secretary of State in England and Welsh Ministers in Wales, CICAIR Ltd maintains and operates the Construction Industry Council Approved Inspectors Register (CICAIR).

CICAIR Ltd is a wholly owned subsidiary of the Construction Industry Council (CIC) and the approval process it operates provides applicants with a route to registration as an Approved Inspector. Approved Inspectors registered with CICAIR Ltd are qualified to undertake building control work in accordance with section 49 of the Building Act 1984 and Regulation 3 and 5 of the Building (Approved Inspectors etc.) Regulations 2010.

CICAIR application and assessment procedures were developed over the course of several years and involved the collaboration of experts drawn from across the membership of CIC and the then Department of the Environment. The procedures were rigorously tested in a seven month pilot study which ran from June to December 1996.

The operations of CICAIR Ltd are overseen and managed by a Board of Directors that is appointed by CIC from a range of backgrounds and specialisms. The Department for Communities and Local Government (DCLG) is now responsible for the Building (Approved Inspectors etc.) Regulations.

Contact: Scott McLew ([smclew@cic.org.uk](mailto:smclew@cic.org.uk))

## Appeals Tribunal

CIC has established an Independent Appeals Tribunal service for its member bodies to meet the requirements of the Human Rights Act 1998. All members of the Construction Industry Council have the option to subscribe to the service but only subscribing members are able to use it.

Individual members of professional bodies may use the Tribunal for appeals against decisions regarding membership and decisions of the disciplinary body of their professional body. The Appeals Tribunal may be used in full, or in part, at the discretion of the subscribing

member, subject to their own requirements. The Tribunal cannot be used in instances where the subscribing member's disciplinary body has found that there is no case to answer.  
Contact: Scott McLew ([smclew@cic.org.uk](mailto:smclew@cic.org.uk))

## Construction Umbrella Bodies (Holdings) Ltd/Considerate Constructors' Scheme

The Construction Umbrella Bodies (Holdings) Company was established in 2000/1 to take ownership of the products that had been owned by the Construction Industry Board. CUB (Holdings) has two members; the CIC and the Construction Products Association, which each own 50% of the company.

Most of these holdings (publications) ceased to have any value, many years ago. However, CUB (Holdings) Ltd is the sole owner of the Considerate Constructors Scheme, which is a self-financing, independent organisation.

The CCS is managed by managing agents (currently Valewell Ltd) who report to a Board of Directors (CCS Ltd), which has recently been reconstituted to include the CIC Chairman and CEO as directors. The managing agent's contract is due for review in 2018.

Construction sites, companies and suppliers voluntarily register with the Scheme and agree to abide by the Code of Considerate Practice, designed to encourage best practice beyond statutory requirements.

The Scheme is concerned about any area of construction activity that may have a direct or indirect impact on the image of the industry as a whole. The main areas of concern fall into three categories: the general public, the workforce and the environment. The Scheme should carry out inspections of registered sites and report on and mark them against the eight key areas listed in the Code of Considerate Practice and finally to reward the best performing sites.

For further information on CCS please go to the website: [www.ccscheme.org.uk](http://www.ccscheme.org.uk)

## Contracts

As the representative forum for the professional bodies, research organisations and specialist business associations in the construction industry the Construction Industry Council is in a unique position to draw upon this wealth of knowledge and experience to create Contracts suitable for the whole industry.

CIC has developed a number of contracts and standard forms of agreement in line with the work of our Liability Panel, these are periodically updated and only available from our website. All contracts, warranties and other publications are available via the CIC online shop.

Contact: ([publications@cic.org.uk](mailto:publications@cic.org.uk))

## Design Quality Indicator (DQI)

**Design Quality Indicator (DQI) is a process that enables every aspect of design quality to be assessed at each stage of the construction process, from inception to post occupancy analysis.**

DQI empowers stakeholders to be actively involved, through structured workshops and online tools, with construction and design professionals, to set targets against which to review design quality. The workshops are professionally mediated by an accredited DQI Facilitator.

- DQI focuses the design and construction team on the needs of the end user as it;
- creates a sense of ownership by engaging users throughout the process;
- enables feedback and learning for future projects;
- generates a simple graphic profile that indicates the strengths and weaknesses of a design or existing building;
- provides an agenda for briefing and design reviews;
- provides benchmarking information in the form of Facilitator's Reports;
- And it helps to develop a more sustainable building.

DQI has been used on hundreds of projects since it was launched in 2002. It can also contribute to a building's BREEAM rating. For more information visit [www.dqi.org.uk](http://www.dqi.org.uk)

Contact: Makis Peppas ([mpeppas@cic.org.uk](mailto:mpeppas@cic.org.uk))

## Economic & Policy Briefing (Chair: Rt. Hon. Nick Raynsford)

The main activity of this forum is to run a series of around 6 seminars per annum. These typically contain two or three presentations from specialists such as representatives of the Bank of England, economic forecasters and senior civil servants.

Attendance of the Forum meetings is open to anyone.

## CIC Publications

CIC has a wide range of professional publications: documents, contracts, guides, reports, professional services surveys available to purchase or for free download.

CIC Consultants' Contract package - £95.00

CIC Scope of Services - £63.00

CIC Services Handbook – £13.00

Collateral Warranty – Purchaser/Tenant - £21.00

Collateral Warranty Consultant/Employer (PDF) - £13.00

Collateral Warranty Consultant/Funder - £21.00

Contract for the Appointment of an Approved Inspector (PDF) – FREE

Model Adjudication Procedure – Fifth Edition (PDF) - £15.00

Model Adjudication Procedure – First Edition (PDF) - £15.00

Model Adjudication Procedure – Second Edition (PDF) - £15.00

Model Adjudication Procedure – Third Edition (PDF) - £15.00

Model Adjudication Procedure - Fourth edition (PDF) - £15.00

Novation Agreement - £21.00

Novation Agreement – Scottish Version - £21.00

Supplemental Agreement – First Edition 2004 (PDF) – FREE

Supplemental Agreement – Scottish Version (PDF) – FREE

Further publications and reports are available at [www.cic.org.uk/shop](http://www.cic.org.uk/shop)

# CIC Board 2016 – 2017

CIC Board comprises up to 12 directors appointed by CIC Council:

Chairman [2016-2018]:	PROFESSOR JOHN NOLAN
Chief Executive:	GRAHAM WATTS OBE
Deputy Chairman [2016-2017]:	TONY BURTON
Honorary Treasurer [2015-2019]:	JO WATKINS
Chairman of CICAIR Ltd [2016-2020]:	RT. HON. NICK RAYNSFORD
MEMBER Director 1 [2016-2020] MEMBER Director 2 [2016-2019] MEMBER Director 3 [2016-2018]	NOEL FARRER DALE SINCLAIR NICK MEAD
UP TO 4 Specialist Directors	MARIA COULTER ANN BENTLEY

## Champions & Chairmen to CIC Committees/Panels:

BIM Forum	Dale Sinclair
Flood Mitigation & Resilience	Sue Illman
Green Construction	George Adams
Health & Safety	Peter Caplehorn
Liability	Sarah Lupton
Lifelong Learning	Professor Barry Clarke
Nations & Regions	John Nielsen
Research, Innovation & Knowledge (& Economy)	Simon Rawlinson
Diversity	Andy Ford ( <i>Interim Chair</i> )
2050 Group	Louise Clarke

## Business Group

Adjudication	Niall Lawless
Appeals Tribunal	Turlogh O'Brien CBE
CCS Ltd	Isabel Martinson
CICAIR Ltd	Rt. Hon. Nick Raynsford
Digital Board	Dale Sinclair
DQI	t.b.a.

## CIC Chairman



### **Professor John Nolan** BSc, MSc, DEng(Hon), C.Eng, FStructE, FICE

John is Chairman of Nolan Associates, Consulting Civil and Structural Engineers. He is also a Visiting Professor at the University of Birmingham, Chairman of a property company, non-exec director of a power company, technical advisor to the Board of Bournville Village Trust and is a Past President of the Institution of Structural Engineers. John is a Fellow of the Institution of Structural Engineers and also the Institution of Civil Engineers. He has over 40 years experience in the construction Industry initially as a contractor, but predominantly as a consultant, and has been responsible for the civil and structural engineering design of projects in almost all sectors of the built environment.

His particular interests are innovation, value engineering, the waste generated by the public sector procurement process and off site fabrication.

He is passionate about the quality and relevance of the knowledge that Civil and Structural Engineering students have when they graduate and has spoken widely on this topic. This led to his appointment as a Royal Academy of Engineering Visiting Professor of Innovation at the University of Birmingham

John has been married to his wife Valerie since they were students and they have a son who is a Chartered Surveyor and two daughters, one of whom is also an Engineer. They have five young grandchildren who occupy much of his spare time. His main sporting interest is Rugby, having been a player and coach at Moseley Rugby Club, where he is also a Vice President.

## CIC Deputy Chairman (2016-2017)



**Tony Burton** BSc (Hons), FRICS, MEWI

Tony is a Senior Partner at Gardiner & Theobald LLP, one of the world's leading independent construction and property consultancies. He has over 30 years experience in the industry and has worked on projects across most sectors. Throughout his career Tony has maintained a commitment to professional standards and to training & developing future generations of surveyors.

Tony has been an External Examiner to quantity surveying courses at Leeds Metropolitan University and The University of Salford. Together with Professor Brian Atkin, Tony was responsible for establishing the MSc. course at Reading University enabling holders of non-cognate degrees to qualify as chartered Quantity Surveyors.

He is an experienced value management facilitator and provides occasional lectures in value management at London Southbank University and Leeds Metropolitan University.

Tony is a Fellow of the Royal Institution of Chartered Surveyors (RICS) and was a member of the RICS Regulatory Board between 2008 and 2014.

He is a Member of the Expert Witness Institute and has provided proofs of evidence for disputes involving litigation, rent review arbitrations and Lands Tribunal cases.

Tony is the current Chair of the Construction Industry Council, co-chair of the Strategic Forum for Construction, and a member of the Construction Leadership Council where he is also Diversity Champion.

## CIC Chief Executive



### Graham Watts OBE

**BA(Hons), HonFRIBA, HonRICS, HonFCIBSE, HonFICWCI, HonFBIID, HonMCIAT, HonFBEng, HonFFB, HonFCInstCES FRSA, MCM**

Graham has been involved with CIC since 1989. Initially, as a member of the Council and its Executive Board, then as a Director. He was appointed Chief Executive and Secretary in October 1991.

Graham is responsible for the general policy and direction of the Council, for maintaining effective communication with Government, other external agencies and with members and for establishing and maintaining the CIC Secretariat and office.

He is an Honorary Fellow of RIBA, CIBSE, CABE, ICWCI, BIID, CICES and the Faculty of Building and an Honorary Member of the RICS and CIAT. He was awarded the President's Medal of the CIOB in 2000 and the Peter Stone Award of the Association of Building Engineers in 1996. Prior to joining CIC, Graham was Chief Executive of the British Institute of Architectural Technologists (a member of CIC) from 1983. He is a Board member of several Trusts and Committees in the Construction and Built Environment sectors and was a Visiting Professor at the University of Northumbria for twelve years from 2000. He has been Secretary of the All-Party Parliamentary Group for Excellence in the Built Environment since 2010.

Graham had a long involvement in the sport of fencing and his competitive career culminated with a Commonwealth Medal in 1990. In 1992, he captained the British Sabre team at the Barcelona Olympic Games. He was the Manager of the British Fencing Team from 1996 and the Performance Director of the British Olympic Fencing Team for 10 years from 2000 to 2010, and Team Leader at the 2004 and 2008 Olympics Games.

Outside of CIC, he is an established international dance writer and critic. He is a member of The Critics' Circle, the UNESCO Dance Council, Dance UK and the Society of Dance Research. He has been Chairman of the Dance Section of the Critics' Circle since 2009 and of the National Dance Awards since 2010. In 2012, he was author of Daria Klimentová's Autobiography "Agony and Ecstasy: My Life in Dance".

Graham received an OBE in the New Years Honours in 2008 for his services to the construction industry.

## Honorary Treasurer



### Jo Watkins

Jo Watkins was born in Swansea and now lives in South London. He is married with 2 children. He has an extensive understanding of the construction industry, working both as lead consultant and as part of a consultant team, as well as on occasions, acting as client.

He is a chartered landscape architect and is a Past President of the Landscape Institute. He served on the Landscape Institute Council for many years and was Honorary Treasurer between 2002 and 2006. He continues to sit on the LI Awards committee and the Editorial Advisory Board for 'Landscape' magazine.

He studied at Thames Polytechnic and qualified as a landscape architect in 1987, after which he has spent all of his career in private practice, latterly as a partner in Watkins:Dally from which he retired in 2010. The practice developed a strong track record in public realm and campus design for which they won a number of awards.

He has held a number of teaching positions including at the University of Greenwich, London Metropolitan University and at the Bartlett School of Architecture. He has contributed to a number of publications. Jo sits on the Advisory Board to the Dean of the school of Architecture, Design and Construction at the University of Greenwich.

He is a member of the RIBA Planning Group. He is Chair of the Twinkle Park Trust which for many years has managed a community park in Deptford, and is Chair of Governors at Brooklands Primary School. He is also sits on the Advisory Board for the Greenwich World Heritage Site.

He is a director of Estateways plc, a property development and investment company based in South Wales.

He watches Swansea City whenever he gets the chance. He is a member of CAMRA.

## CICAIR Chairman



### The Rt Hon Nick Raynsford

Nick Raynsford was the Member of Parliament for Greenwich and Woolwich from 1997-2015 (and previously for Greenwich 1992-1997).

He served as a Government Minister from 1997 initially in the Department of the Environment, Transport and the Regions (DETR), holding responsibility for Housing, Planning and Construction as well as being Minister for London.

He was Minister for Local and Regional Government in the Office of the Deputy Prime Minister from 2001-2005, also holding responsibility for the Fire and Rescue Service and for Resilience Planning.

He was made a Privy Councillor in the 2001 New Year's Honours. He left the Government in 2005.

Nick was Shadow Minister for Housing and Construction from 1994 and Front Bench Spokesperson for London from 1993. He was a member of the House of Commons Environment Select Committee from 1992-1993.

Nick was Member of Parliament for Fulham from 1986-1987, and was a Councillor in the London Borough of Hammersmith and Fulham from 1971 until 1975.

He was Director of SHAC, the London Housing Aid Centre from 1976-1986 and Director of Raynsford and Morris, Housing Consultants from 1987-1992.

Nick Raynsford is currently President of the Town and Country Planning Association and President of Constructionarium. He is Chairman of Triathlon Homes, the NHBC Foundation, the Tideway Reporting Board and the Icen Commission on Sustainable Development. He is Honorary Vice-Chairman of the Construction Industry Council. He is a Non-Executive Director of Hometrack, and the Fire Protection Association, serves on the Pocket Advisory Board and is a Trustee of Open City.

He is an Hon Fellow of the Institution of Civil Engineers, the Royal Town Planning Institute, the Royal Institute for British Architects, the Institute of Structural Engineers, the Association of Building Engineers and the Society for the Environment. He is an Hon Member of the Royal Institution of Chartered Surveyors, the Chartered Institute of Housing and the Worshipful Company of Constructors.

He has a degree in History from the University of Cambridge, a Diploma in Art and Design from Chelsea School of Art, and an Hon Doctorate of Business Administration from the University of Greenwich.

Nick's new book 'Substance not Spin' was published by Policy Press in July 2016.

# Directors

## Ann Bentley, Advisor to the Board

Ann is a global director and global chairman of Rider Levett Bucknall, which employs more than 450 staff in the UK and 3,600 worldwide, operating in over 40 countries. Ann is responsible for the company's strategic direction, cohesion and governance.

Ann is a member of the UK Government's Construction Leadership Council and a member of the CBI's Construction Council. She is a Chartered Member of the Institution for Civil Engineers (MICE), a Fellow of the Royal Institution of Chartered Surveyors (FRICS) and holds an MBA from Henley Management College.

In the academic world Ann is a visiting Professor of Business Management, Project Management and Quantity Surveying at Birmingham City University and a visiting lecturer in the School of Construction Management and Engineering at Reading University. A judge for a number of industry awards, she is also a regular commentator in national and trade media and speaker at national and international construction conferences, recently speaking at events in Kazakhstan and Shanghai.

## Maria Coulter, Non-Executive Director

With a career spanning over 20 years in the industry as a Quantity Surveyor, Project Manager and Risk Manager, Maria's interest in personal development led her to become a qualified personal and business coach in 2012.

In 2014 Maria started her own business, Construction Coach providing Executive and Business Coaching to organisations and individuals around performance, team building, strategy and business planning. Maria is also an APC Coach and delivers leadership and management training to the construction industry.

As well as being a regional board member for the RICS, Maria is Chair of the Construction Industry Council for the East Midlands and Construction Ambassador for the D2N2 Local Enterprise Partnership.

## Noel Farrer, Member Appointed Director

Noel Farrer is a landscape architect and urban designer and founding director of Farrer Huxley Associates.

Over 30 years experience working as a landscape architect in both public and private sector. All of his work is founded on the belief that landscapes make an essential contribution to the generation of sociable and sustainable communities. Much of the work that Noel has delivered over the past 18 years has been category 'firsts' and has won awards for their exemplary contribution to the industry as a whole. It is his broad perspective when approaching landscape that is his greatest quality in his current role as President of the Landscape Institute.

Clients include GPE, Cathedral Group, Peabody Trust with a focus on projects ranging from residential, education, parks and public realm. Noel was President of the Landscape Institute from 2014 – 2016. He sits on the (DCLG) Design Advisory Panel For Housing, DC CABE's Infrastructure and Design Panels as well as being chair and panel member on a number of regional panels. Noel is a regular columnist and visiting lecturer on landscape architecture.

### **Nick Mead, Member Appointed Director**

Nick Mead joined Haden Young as an Apprentice in 1978. He progressed within Haden working on many diverse projects including Pharmaceutical and Manufacturing developments. He left as an Engineering Manager in 1995 and joined WSP London as an Associate Director, becoming a Director shortly after. Nick joined ACDP in November 2000 as an Associate Director and was shortly promoted to Director and then Managing Director. Subsequent to a role with Imtech as their Engineering Director for the London business he is now operating independently as Nick Mead Associates

His roles in CIBSE have included Board Member, Honorary Treasurer, Chair of the CIBSE Patrons and Chair of the CIBSE Industry and Education Group.

### **Dale Sinclair, Member Appointed Director**

Dale Sinclair is AECOM's Director of Technical Practice, Architecture responsible for EMEA (Europe, Middle East and Africa). Dale's core expertise is the delivery of large scale projects. He has experience in delivering health, leisure, education, offices and retail projects as well as developing the processes required to successfully deliver these on time, programme and to the client's quality requirements. He was previously a Director of Dyer an international architectural practice based in London and was also an Associate Director at BDP.

He is passionate about delivering projects more effectively, believing that the lead designer's role is central to this goal. His publication in 2011 for RIBA Enterprises: Leading the Team: An Architects Guide to Design Management is aimed at those who share these objectives. He regularly speaks on the RIBA Plan of Work 2013 and BIM.

He is RIBA Vice President responsible for Practice and Profession, an RIBA Trustee and Councillor, and is currently a Director of RIBA Insurance Agency. He was the chair of the RIBA Large Practice Group from 2007 – 2013 and the editor of the BIM Overlay to the RIBA Outline Plan of Work 2007. As well as editing the new Plan of Work 2103, Dale chaired the RIBA task group responsible for developing it, assisted in the development of the on-line tools and authoring the supporting publications including the Guide to using the RIBA Plan of Work 2013 and Assembling a Collaborative Project Team. He is also a member of the CIC BIM Forum and on the board of BuildingSMART UK.

# CIC Staff

## **Graham Watts OBE – Chief Executive**

[gwatts@cic.org.uk](mailto:gwatts@cic.org.uk)

Ensure that the CIC fulfils its objects in accordance with its Memorandum of Association. Responsible for the development and continuous good practice of the welfare of CIC and its members.

Responsibility for the administration of the Board.

## **Eve Farraud BEM – Executive Assistant**

[efarraud@cic.org.uk](mailto:efarraud@cic.org.uk)

0207 399 7402

Executive Assistant to Graham Watts & Office management

## **Scott McLew – Chief Operating Officer & Registrar**

[smclew@cic.org.uk](mailto:smclew@cic.org.uk)

0207 399 7422

Responsible for the Approved Inspectors Register, the Adjudication Nomination Body and the Appeals Tribunal.

## **Makis Peppas – DQI Manager**

[mpeppas@cic.org.uk](mailto:mpeppas@cic.org.uk)

0207 399 709

Responsible for DQI issues and DQI Facilitators.

## **Liz Drummond – Events, Communications & Marketing Manager**

[ldrummond@cic.org.uk](mailto:ldrummond@cic.org.uk)

0207 399 7430

Events Management, Marketing & Communications. Website & Social Media. Press Enquiries. Nations & Regions.

## **Kamila Tomaszewska –Policy, Committees & Events Co-ordinator**

[ktomaszewska@cic.org.uk](mailto:ktomaszewska@cic.org.uk)

0207 399 7414

Events Co-ordinator (incl. APPG EBE)/CIC Committees

## **Karen Syme – Marketing & Projects Co-ordinator**

[ksyme@cic.org.uk](mailto:ksyme@cic.org.uk)

0207 399 7412

Marketing & Communications and assists with Diversity Panel, E4BE and 2050 Group.

## **Laura Russell – Assistant Registrar**

[lrussell@cic.org.uk](mailto:lrussell@cic.org.uk)

0207 399 7403

Approved Inspectors issues.

**Chi Wong – Office Administrator**

[cwong@cic.org.uk](mailto:cwong@cic.org.uk)

0207 399 7423

Provides various office administration and assists with Adjudications and DQI queries and reception assistance.

**Gintare Barzdyte – Finance Assistant (part time)**

[gbarzdyte@cic.org.uk](mailto:gbarzdyte@cic.org.uk)

0207 399 7406

Provides financial assistance to CIC.

General CIC main tel: 020~7399 7400

General CIC fax number: 020~7399 7425

DQI main tel: 020~7399 7424

Construction Industry Council

The Building Centre

2<sup>nd</sup> Floor

26 Store Street

London

WC1E 7BT

Twitter: @CICTweet

LinkedIn.com/CIC

## Meeting Dates 2017

DATE	COMMENCE TIME	MEETING	VENUE
Wednesday, 18 January	10.00-12.30	BOARD	CIC
Wednesday, 18 January	1.00-3.00	Business Panel	CIC
Tuesday, 24 January [new date]	10.00-12.00	Membership panel	Royal Town Planning Institute 41 Botolph Lane London EC3R 8DL
Wednesday, 25 January	11.00-1.00	Flood Mitigation & Resilience Panel	CIC
Friday, 27 January	9:30 -12:30	BIM Forum	BIS Conference Centre, One Victoria Street, London SW1A
Thursday, 2 February		CIC ANB	CIC
Friday, 3 February	2.00-4.00	Liability Panel	CIC
Monday, 6 February	2.00-5.00	Health & Safety Committee	CIC
Tuesday, 7 February	10.00-12.00	Membership panel	Tbc
Thursday, 9 February	10.30-1.00	CICAIR Management Board	CIC
Monday, 20 February	2.30-4.30	Diversity Panel	CIC
Tuesday, 21 February	9:30 -12:30	Economic and Policy Briefing	ICE, One Great George Street, SW1A
<b>Wednesday, 22 February</b>	<b>10.00-12.30</b>	<b>BOARD</b>	<b>CIC</b>
<b>Wednesday, 22 February</b>	<b>1.00-3.00</b>	<b>Project Panel</b>	<b>CIC</b>
Monday, 6 March	2.30-4.00	Finance Committee	CIC
Thursday, 23 February	9.30-ALL DAY	Independent Appeals Tribunal	CIC
Thursday, 9 March	10.30-12.00	BEPE Project Board	G&T 10 South Crescent London WC1E
Thursday, 2 March	10.30-1.30	Independent Appeals Management Board	CIC
Thursday, 16 March	10.30-12.30	Nations & Regions Chairmen's Meeting	CIC
<b>Thursday, 16 March</b>	<b>2.30-5.00</b>	<b>COUNCIL</b>	<b>IStructE</b> , 47-58 Bastwick Street, London, EC1V 3PS
Friday, 17 March	9:30 -12:30	BIM Forum	BIS Conference Centre, One Victoria Street, London SW1A
Tuesday, 21 March	9:30 -12:30	Economic and Policy Briefing	ICE, One Great George Street, SW1A
Thursday, 6 April	2.00-4.00	Liability Panel	CIC
<b>Wednesday, 26 April</b>	<b>10.00-12.30</b>	<b>BOARD</b>	<b>CIC</b>
<b>Wednesday, 26 April</b>	<b>1.00-3.00</b>	<b>Business Panel</b>	<b>CIC</b>
Tuesday, 9 May	9:30 -12:30	Economic and Policy Briefing	ICE, One Great George Street, SW1A
Wednesday, 10 May	10.00-12.00	Membership panel	RICS, Brussels Room 1 Great George Street SW1
Friday, 12 May	9:30 -12:30	BIM Forum	BIS Conference Centre, One Victoria Street, London SW1A
Wednesday, 17 May	11.00-1.00	Flood Mitigation & Resilience Panel	CIC
<b>Thursday, 18 May</b> <b>Friday, 19 May</b>	<b>5.00pm-</b> <b>10.30pm</b> <b>9.00am-</b> <b>2.30pm</b>	<b>CIC AGM &amp; Dinner</b> <b>Members' Conference</b>	<b>TBC</b>
Thursday, 25 May	10.30-1.00	CICAIR Management Board	CIC
Thursday, 8 June	2.30-4.30	Diversity Panel	CIC
Tuesday, 6 June	2.00-5.00	Health & Safety Committee	CIC

<b>Wednesday, 7 June</b>	<b>10.00-12.00</b>	<b>BOARD</b>	<b>CIC</b>
<b>Wednesday, 7 June</b>	<b>1.00-3.00</b>	<b>Project Panel</b>	<b>CIC</b>
Friday, 16 June	2.00-4.00	Liability Panel	CIC
Wednesday, 21 June	10.30-12.30	Nations & Regions Chairmen's Meeting	CIC
<b>Wednesday, 21 June</b>	<b>2.30-5.00</b>	<b>COUNCIL</b>	<b>TBC</b>
Tuesday, 4 July	9:30 -12:30	Economic and Policy Briefing	ICE, One Great George Street, SW1A
Tuesday, 4 July	2.30-4.00	Finance Committee	CIC
<b>Thursday, 6 July</b>	<b>9.30-ALL DAY</b>	<b>Independent Appeals Tribunal</b>	<b>CIC</b>
Friday, 7 July	9:30 -12:30	BIM Forum	BIS Conference Centre, One Victoria Street, London SW1A
<b>Wednesday, 19 July</b>	<b>10.00-12.30</b>	<b>BOARD</b>	<b>CIC</b>
<b>Wednesday, 19 July</b>	<b>1.00-3.00</b>	<b>Business Panel</b>	<b>CIC</b>
Thursday, 20 July	10.30-1.30	Independent Appeals Management Board	CIC
Thursday, 10 August	10.30-1.00	CICAIR Management Board	CIC
Monday, 11 September	11.00-1.00pm	Flood Mitigation & Resilience Panel	CIC
<b>Tuesday, 12 September</b>	<b>10.00-12.30</b>	<b>BOARD</b>	<b>CIC</b>
<b>Tuesday, 12 September</b>	<b>1.00-3.00</b>	<b>Project Panel</b>	<b>CIC</b>
Thursday, 14 September	2.30-4.30	Diversity Panel	CIC
<b>Wednesday, 13 September</b>	<b>10.00-12.00</b>	<b>Membership panel</b>	<b>CIRIA, 15 Long Lane London EC1A 9PN</b>
Thursday, 21 September	2.00-4.00	Liability Panel	CIC
Wednesday, 27 September	2.00-5.00	Health & Safety Committee	CIC
Thursday, 5 October	9.30-ALL DAY	Independent Appeals Tribunal	CIC
Tuesday, 10 October	9:30 -12:30	Economic and Policy Briefing	ICE, One Great George Street, SW1A
Friday, 13 October	9:30 -12:30	BIM Forum	BIS Conference Centre, One Victoria Street, London SW1A
<b>Tuesday, 17 October</b>	<b>10.00-12.30</b>	<b>BOARD</b>	<b>CIC</b>
<b>Tuesday, 17 October</b>	<b>1.00-3.00</b>	<b>Business Panel</b>	<b>CIC</b>
Thursday, 19 October	10.30-1.30	Independent Appeals Tribunal Management Board	CIC
Tuesday, 24 October	2.30-4.00	Finance Committee	CIC
Wednesday, 25 October	10.30-12.30	Nations & Regions Chairmen's Meeting	CIC
<b>Wednesday, 25 October</b>	<b>2.30-5.00</b>	<b>COUNCIL</b>	<b>TBC</b>
Thursday, 9 November	10.30-1.00	CICAIR Management Board	CIC
Tuesday, 14 November	9:30 -12:30	Economic and Policy Briefing	ICE, One Great George Street, SW1A
<b>Wednesday, 15 November</b>	<b>10.00-12.30</b>	<b>BOARD</b>	<b>CIC</b>
<b>Wednesday, 15 November</b>	<b>1.00-3.00</b>	<b>Project Panel</b>	<b>CIC</b>
Thursday, 16 November	2.30-4.30	Diversity Panel	CIC
Friday, 24 November	2.00-4.00	Liability Panel	CIC
<b>Wednesday, 29 November</b>	<b>10.00-12.00</b>	<b>Membership panel</b>	